

Casing Total Depth Solutions (CTDS)

Geopro's Casing Total Depth Solutions (CTDS) team delivers best-in-class, risk mitigation assignment with the successful deployment of 3515m (11,532') of 9-5/8" casing through 2167m (7,109') of openhole shale section. This continues to depict Geopro's commitment to excellent service and fit-for-purpose solutions.

What: Deployment of 9 5/8" casing string through extremely difficult continuous shale column below the 13 3/8" casing shoe.

When: June, 2012

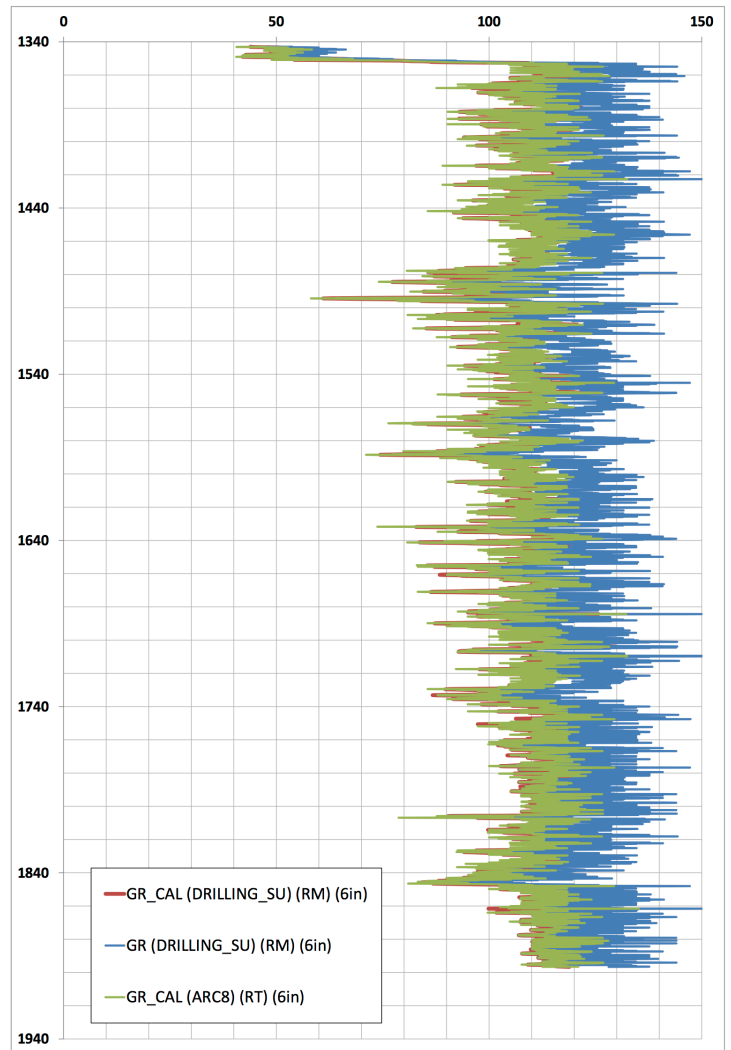
Where: On-shore Baltic Sea for Eurasia Drilling Company (EDC) onshore Russia Federation

Result: Successful with very satisfied customer.

The GeoGlider Xtreme centralizer, an ultra low friction centralizer was used and placed effectively across the entire section with a 50% stand-off spacing arrangement.



To the right is the Gamma Ray plot (TVD scale) for the 12 1/4" section showing a continuous shale column from the base of the 13 3/8" at 1347m TVD to the 12 1/4" section TD at 3515m MD (1958m TVD). This is +/- 2167m (7,109') of openhole shale section.



Geopro was called upon to look at solutions to effectively deploy/lower the 9-5/8" casing successfully. After extensive analysis the proposal to the customer required:

- A detailed risk analysis of available systems and technologies in the market place. After discussions with the client where Geopro provided comparative analysis and risk assignment to available technologies and techniques, the client was convinced with Geopro's technology for the specific application.
- ultra-low friction centralizers and strategic placement plan: Geopro proposed a uniform 50% stand-off across the entire open hole section with GeoGLIDER Xtreme centralizers specially suited for OBM applications. This was necessary since the client was also going to drill the section using oil base mud. The 50% stand-off was required to ensure minimal contact between the formation and the casing string thus reducing the effective friction factors for the casing run operations.
- The use of specialized casing accessories to glide over restrictions or ledges thus stimulating a reaming action that could lead to better chances of landing the casing string. Geopro proposed a combination of the NaviGATOR SUB and the BridgeBUSTER FastDRILL reamer shoe. The 9-5/8" NaviGATOR SUB provides a full 30 - 60 degrees rotation of the BridgeBUSTER reamer shoe every kelly down. This means with every 6 - 12 casing joints lowered in hole a full 360 degrees revolution is achieved.



The result was a successful deployment of 3500m + of 9-5/8" casing across 2167m of openhole shale section.