

ICHNIA 2020

First Circular



Welcome!

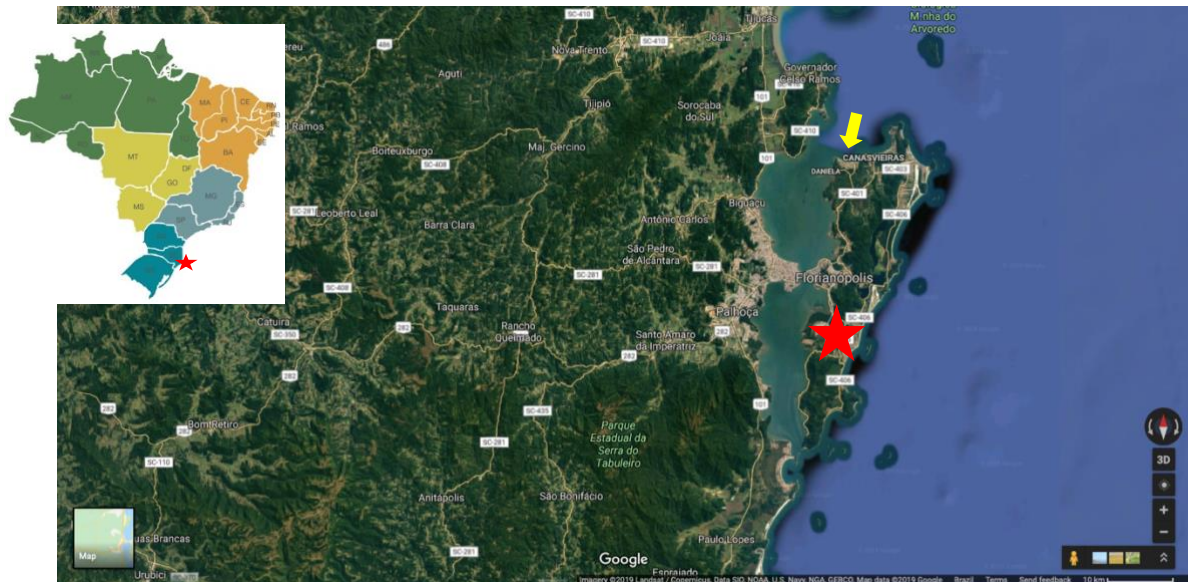
Every four years, ichnologists from around the world join in a selected place to discuss the progress of our science, share experiences and ideas, and celebrate One Ichnology! With the first edition in 2004 in Trelew, Argentina, ICHNIA – The International Congress on Ichnology took place in Krakow (Poland), St. John, Newfoundland (Canada), and Idanha-a-Nova (Portugal). Brazil had been chosen to house the fifth edition of ICHNIA, and we are proud to be the next hub of Ichnology and to share with you a few of the vast heritage of ancient and modern biogenic structures.

Welcome to Brazil! Welcome to ICHNIA 2020 – The 5th International Congress on Ichnology!

Venue

ICHNIA 2020 will be held on October 26-30, 2020 in Florianópolis, Santa Catarina State, southern Brazil, in the [Canto da Ilha Hotel and Convention Center](#). The [Canto da Ilha Hotel](#) is a perfect place for ICHNIA 2020 as it provides single, double, and triple-based accommodation and has a good infrastructure of rooms and auditoriums for the meeting activities. It also counts with a pool area for relaxing and two soccer courts for our traditional ICHNIA Soccer Game. The hotel is surrounded by hills covered by Mata Atlântica Rain Forest ecosystem and is 200 m from the Cachoeira do Bom Jesus Beach. A

natural mangrove strip extends in the backshore zone allowing observation of crabs in burrowing activity.



Location map of Florianópolis (red star) and the Canto da Ilha Hotel (yellow arrow).

Credits: Brazil map from multarte.com.br; Florianópolis map from Google Maps.

Scientific activities

Apart from technical sessions, the scientific activities will cover pre-, intra-, and post-congress field trips, and pre-congress short courses and workshops.

Field excursions

Three field trips are already confirmed, one to explore the trace fossils from the Jurassic-Cretaceous aeolian Botucatu Formation, in São Paulo State (pre-congress field trip), another to explore dinosaur tracks and trackways from Souza Basin, in Paraíba State (post-congress field trip), and a third to see the invertebrate trace fossils from the Paleozoic deposits of the Paraná Basin, in Paraná and Santa Catarina states (post-congress field trip).

The Jurassic-Cretaceous deposits of the Botucatu Formation contain a considerable record of vertebrate footprints, including dinosaurs and early



mammals, and also arthropod trackways and burrows. Giuseppe Leonardi originally studied part of these occurrences and registered it in his “*Annotated Atlas of South America Tetrapod Footprints (Devonian to Holocene) with an appendix on Mexico and Central America.*” Heitor Francischini, Paula Dentzien-Dias, and Marcelo A. Fernandes will guide the participants in an up to 3-days tour through the sidewalks of Araraquara city to see these specimens of *Brasilichnum elusivum* and fascinating dinosaur tracks and trackways, as well as *Taenidium* and arthropod trackways and burrows preserved in the sandstone slabs used as pavement. A visit to local collections to see selected specimens is also planned.

The dinosaur tracks and trackways preserved in the Cretaceous floodplain deposits of the Souza Basin were also studied by Giuseppe Leonardi, whose efforts were crucial for the protection of this wonderful record. The up to 4-days tour post-congress field trip will visit the *Vale dos Dinossauros* Natural Monument and some selected outcrops in the surrounds and may include a visiting day to the Cretaceous fossil-lagerstätten of the Araripe Basin (Santana Formation). Aline B. Ghilardi, who is currently working with the Souza Basin ichnological record will lead this field excursion.

The Paleozoic deposits of the Paraná Basin are rich in invertebrate trace fossils. They will be the focus of the up to 4-days tour post-congress field trip, and Daniel Sedorko, João Lima, and Renata Netto will guide the participants to see the Brazilian *Cruziana acacensis* occurrences used by Dolf Seilacher to calibrate the ichnostratigraphy of the Silurian. The localities of the Devonian crowded *Rosselia* ichnofabric, and the ‘*Zoophycos* carnival’ will also be visited, besides other localities with a rich Lower Paleozoic Cruziana Ichnofacies assemblage. The field trip will also visit a few quarries in which the Gondwanan glacial trace fossil assemblage is abundant and where lots of microbially induced sedimentary structures (MISS) can be observed. Localities with the post-glacial trace fossil assemblage will also be



visited to see the impoverished marginal-marine and shallow marine trace fossil suites that followed the Gondwanan post-glacial marine transgression in the basin.

Further details, such as schedule, price, main airports for arrival-departing flights*, and minimum-maximum number of participants will be provided in the second circular.

Neoichnology is the scope of the intra-congress field trip when we will explore the biogenic structures currently made in some Florianópolis beaches, including backshore dunes, ephemeral lagoons, and subtropical mangrove (= restinga) margins. This field trip is open to all registered participants and is covered by the congress fees.

* **Caution!** The pre-congress field excursion to Botucatu Fm. deposits will depart from Ribeirão Preto Airport (São Paulo State), and the post-congress field trip to Souza Basin will depart from Juazeiro do Norte Airport (Pernambuco State). Participants must be aware of including the internal flights in your travel plan, as the field trip costs will not cover them.

Short courses and workshops

Short courses and workshops will occur on October 24-25, 2020. These activities will focus on themes that were claimed by the ichnocommunity, based on the comebacks to the perception survey that preceded this circular, such as:

- comprehension of microbial mediation and the record of MISS as evidence of biostratification structures
- the ichnological record of plant-insect interactions
- ichnotaxonomy
- the use of analytical tools in the study of trace fossils
- taphonomy of trace fossils
- trace fossil analysis in cores



Short courses will last a minimum of 4h and a maximum of 16h, and workshops will last a minimum of 8h and a maximum of 16h, according to the activity program. The set of short courses and workshops will be detailed in the second circular.

Technical sessions and keynote talks

Technical session will occur on October 26, 27, 29, and 30 and will include oral and poster sessions, as well keynote talks. The technical sessions are open for contributions that discuss any topic of interest of Ichnology and will encompass four major themes: (paleo)biology, (paleo)ecology, (paleo)environmental reconstruction and stratigraphy, and advances in ichnological analysis (the future of ichnology).

The keynote talks will also consider these four major themes and will represent the diversity of thematic groups that compose the ichnological community.

Social events

As science is not everything in life, a little fun also does well. Thinking on this, the Organizing Committee is planning daily social events for your delighting, such as the ice-break reception (Sunday 25 evening), daily happy hours at the pool (after technical sessions), the conference dinner (Thursday 29 evening), and the ICHNIA Soccer Game, followed by a Brazilian night (Wednesday 28 late afternoon-evening).

ICHNIA 2020 is rescuing the original format of the ICHNIA Soccer Game (as it was performed in ICHNIA 2004), in which **The Americas** will play against **The Rest of the World**. Join a team and start to practice! ICHNIA Soccer Game accepts male and female players without any distinction!

Touristic assistance will also be offered during the meeting for those interested in exploring Florianópolis and its beautiful beaches or extending the stay to visit other places in Brazil.



Accommodation and conveniences

Florianópolis is a big island, the distance between other hotels and the congress headquarters may be considerable, and the traffic on the island is heavy during rush hours. Also, the frequency of public transportation to the Cachoeira do Bom Jesus Beach is low, and most of the taxi drivers don't speak English (the same is true for restaurants and services, unfortunately!). Stay in another hotel might imply in arriving late in the congress activities or be in risk for not be able to communicate in your way to the congress.

Thus, for safety and logistic reasons, it is strongly recommended that all participants stay in **Canto da Ilha Hotel** [<https://www.cantodailha.com.br>]*. The hotel offers single, double, and triple rooms and prices are estimated to be around USD 50 (single), 65 (double), and 80 (triple) per night, breakfast included. The hotel does not have a website in English. For full information in English, please contact ichnia2020@gmail.com.

Meals and conveniences

Lunch will be provided by ICHNIA 2020 at the hotel. For dinner, the restaurant at the hotel will offer a salad bar and a choice of hot menu for those that prefer to do not leave the hotel. There are some choices of bars and restaurants in a ray of 2 km from the hotel for those that prefer to go outside for dinner. Suggestions about the gastronomy and attractions on the island will be provided daily by the Organizing Team.

A few convenience stores, as well as pharmacy, mini-market, and gas station, can also be reached in the surroundings of the hotel.

Arriving in Florianópolis

There are three ways to arrive in Florianópolis: by car, by bus, or by plane. Those that will arrive by car must be aware that all traffic information is provided in Portuguese. If you are not able to understand it, bus or plane should be the best



choices. You must be aware also to the speed limits, as the main road (BR-101 Road) that arrives in Florianópolis is full of speed controllers and the fines are expensive! There is only one bus terminal and one airport in Florianópolis, so all buses and flights arrive in the same respective place. We will do our best to provide transfers for the hotel, but it is still too early to confirm it.

Brazilian currency

Brazilian Real (BRL or R\$) is the official currency in Brazil. Foreign currencies are not accepted in almost all places, so you need to have cash in Brazilian Reals. US Dollars and Euros (and traveler checks) can be exchanged in almost all exchange money shops, but they are far from the hotel. Thus, the best option is to change some amount of money at the airport when arriving and use an international credit or debit card.

Visa and vaccination requirements

Please, check carefully if you are eligible to come to Brazil without a **visa**, and if you need a special type of visa to come for a congress (business and tourism visa) **before** planning your trip.

Yellow fever has re-appeared in some areas in Brazil. Vaccination is not mandatory, but strongly recommended. Be aware that you need to be immunized at least 10 days before your trip. Also, there are some tropical diseases that are transmitted by mosquitoes (dengue fever, chikungunya fever). Be aware to use insect repellent or any other method to avoid mosquitoes during the day (*Aedes aegypti* bites mostly during the morning or the evening).

Health insurance, medication, dietary restrictions

The Brazilian public health service uses to assist emergencies without charge, but you will possibly have to wait many hours to be attended. Thus, it is strongly recommended that you travel with health insurance. Bring all the medication of



permanent use and also those specific medicines that you must have for an emergency. Do not forget to bring the recipes, preferentially with the generic name of the active substance, in the case that you need to buy an extra supply. Dietary restrictions, as well as chronic diseases and allergies, must be informed in the subscription form. ICHNIA 2020 will not be responsible for any situation caused by the lack of these particular data.

ICHNIA 2020 fees (estimation)

Due to the instability of the Brazilian economy and the dramatic cuts in science budget this year, we are unable to establish the congress fees right now. We will do our best to raise money for the congress, but the actual scenario of sponsoring is totally uncertain.

The initial estimative suggest a full average fee of USD 600. The congress fee includes credentials, abstracts, bag, and t-shirt, all lunches, the intra-congress field trip, the ice-break party, and the Brazilian night dinner. We will try to include transfers and the conference dinner as well, but at this moment it is not included. Hotel accommodation and the non-listed meals are not included in this fee. Payments will be starting on January 2020.

Members of the International Ichnological Association (IIA) are eligible for a discount in the congress fee during early bird payment dates (January to May 2020). The discount for IIA Members will be up to 20% for those with 2 years of active membership (2019 and 2020), and up to 10% for those with 1 year of active membership (2020).

Field excursions costs are still broadly estimated. A minimum of USD 300 is considered for the pre-congress field trip, and USD 300 to 400 for the post-congress field trips. Field trips fee includes transportation from departing airport/hotel to the field localities, hotel accommodation (double-base) and meals during the field trip, field trip guide, water/soft drinks, and snacks.

Short courses and workshops fees will vary according to the number of hours involved in the activity. Professional participants are encouraged to support a course or a workshop for at least one student in the subscription form.



Pre-subscription

If you are interested in ICHNIA 2020, please fill the pre-subscription form available at https://docs.google.com/forms/d/1KAMofXv6QjdR5vl-wm4SGn2PB-Xq3r_D8538BUXMBpU/edit.

We strongly recommend that you print your form and send it to ichnia2020@gmail.com as a safe copy.

Final comments

Additional information regarding abstract submission and student grants will be addressed in the second circular (September-October 2019).

