

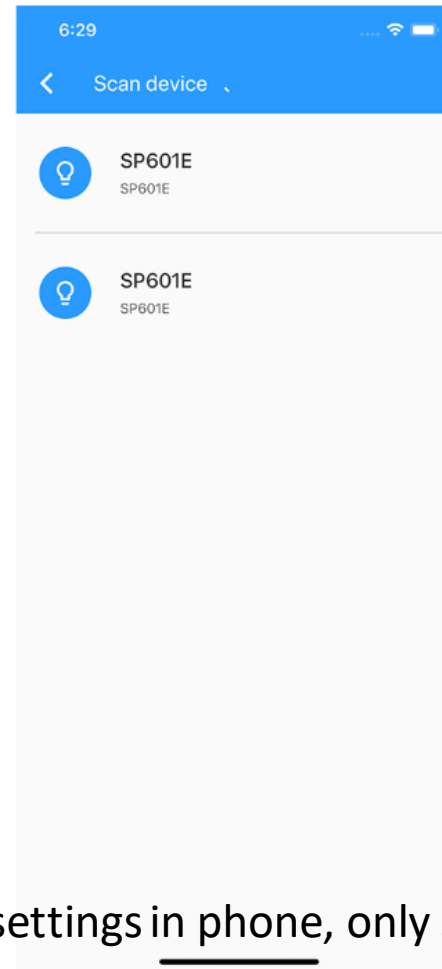
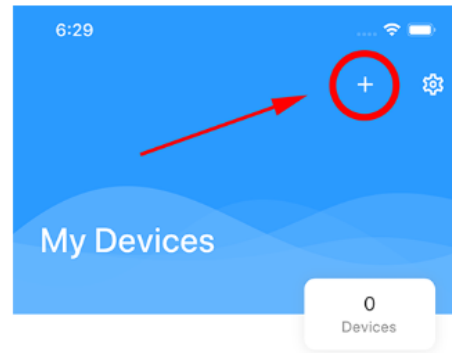
Scenex

How to Do  
Pages



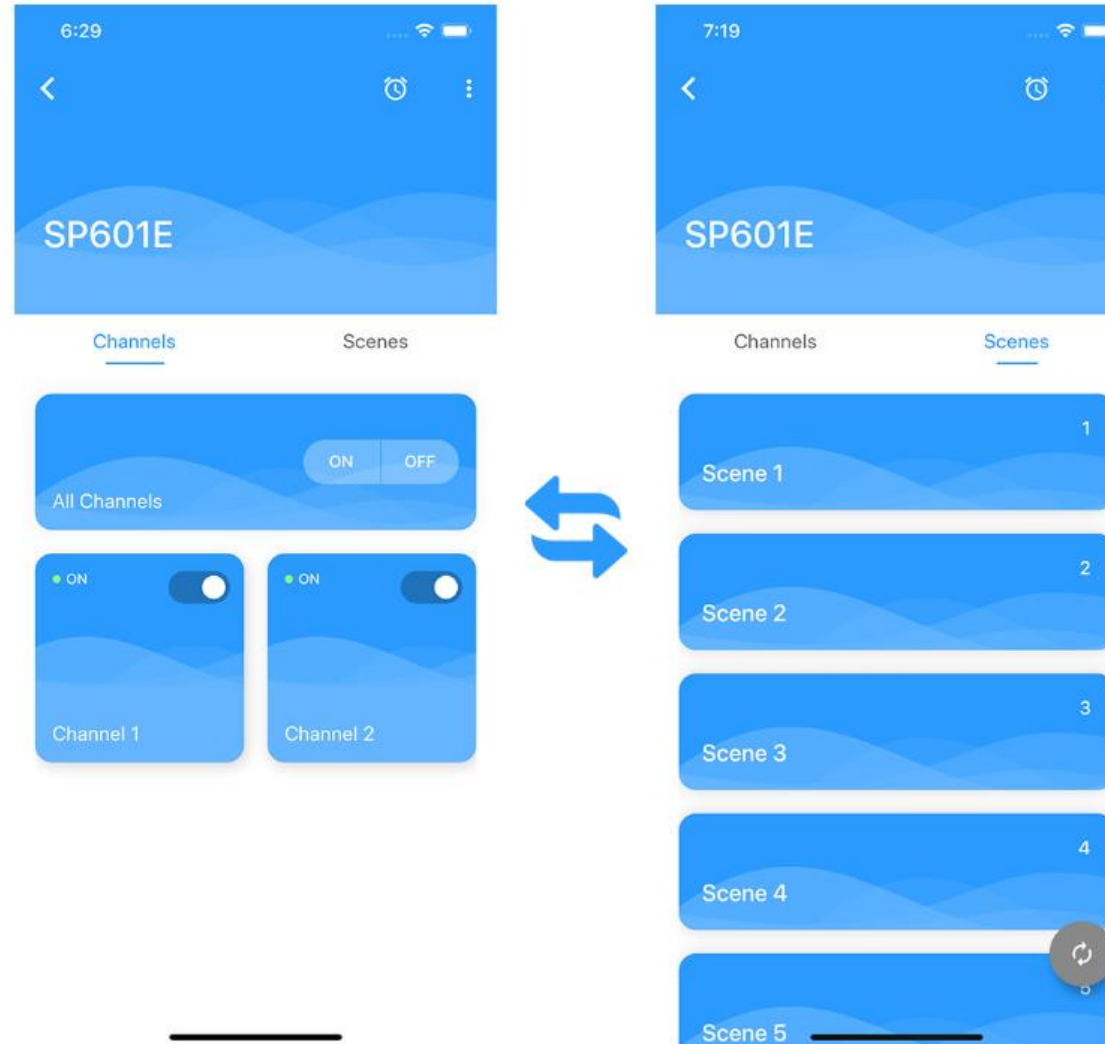
# 1. Connecting controller to app

1. Connect to a new SP601E controller.

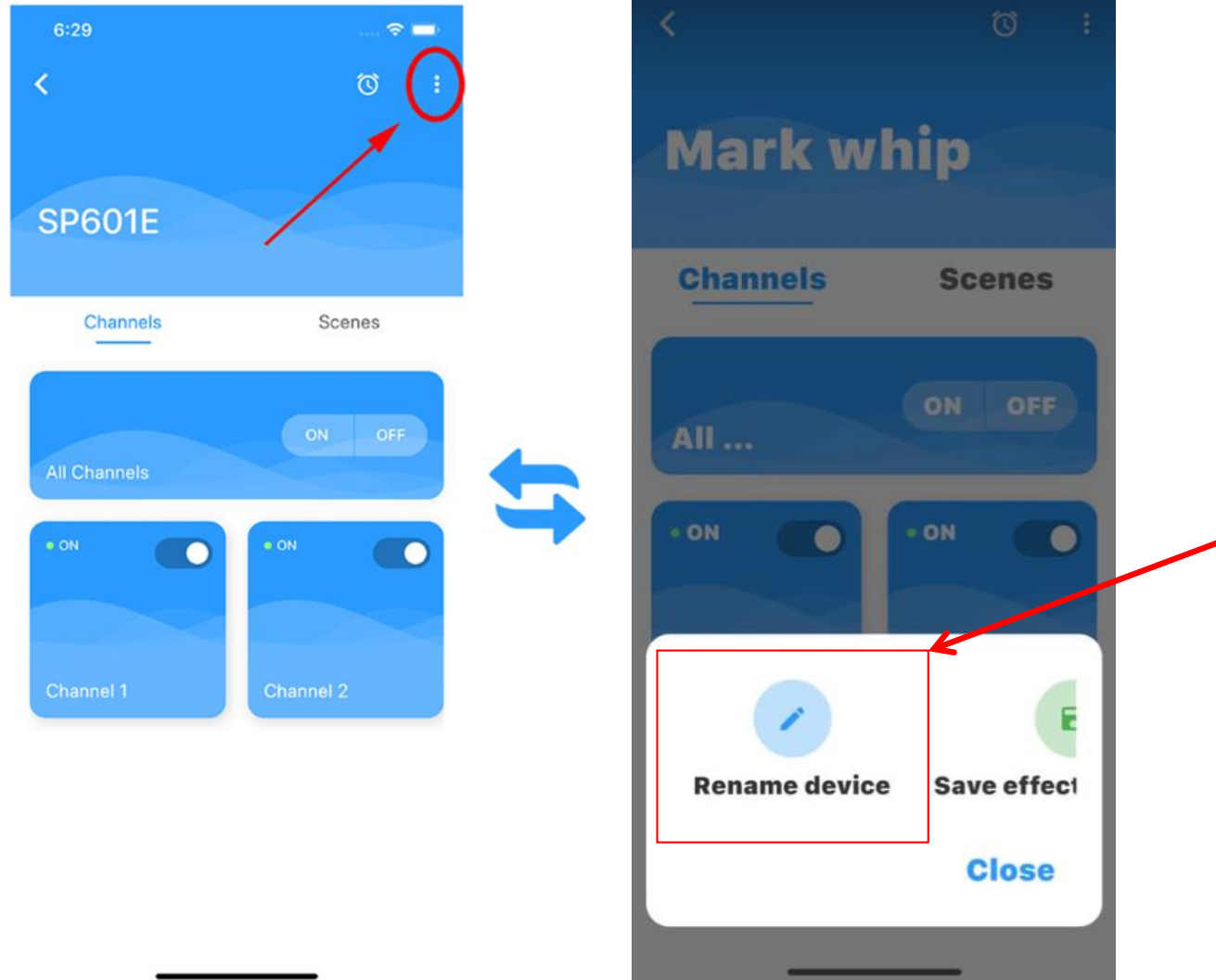


Note: do not connect through settings in phone, only set in the app

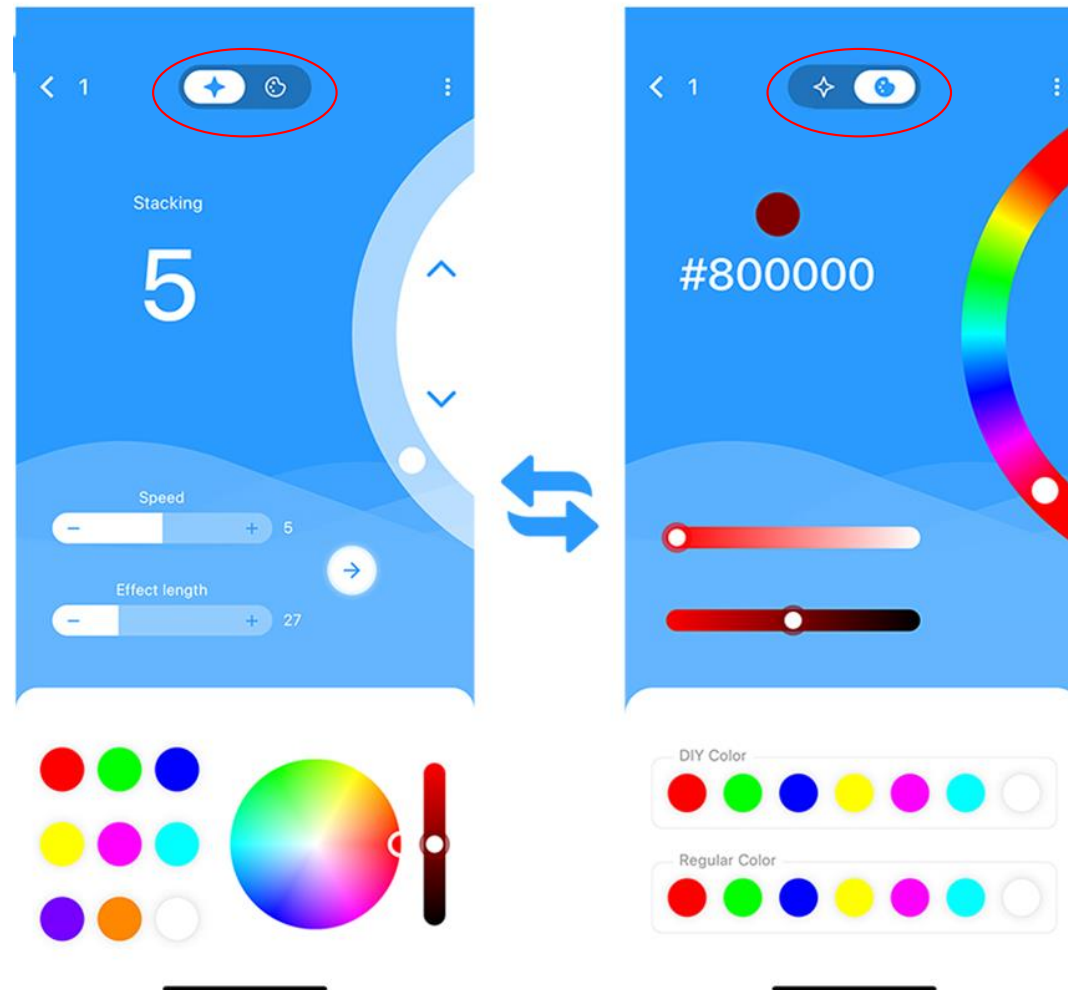
2. SceneX Controller can output two different signals, and supports 9 scenes.



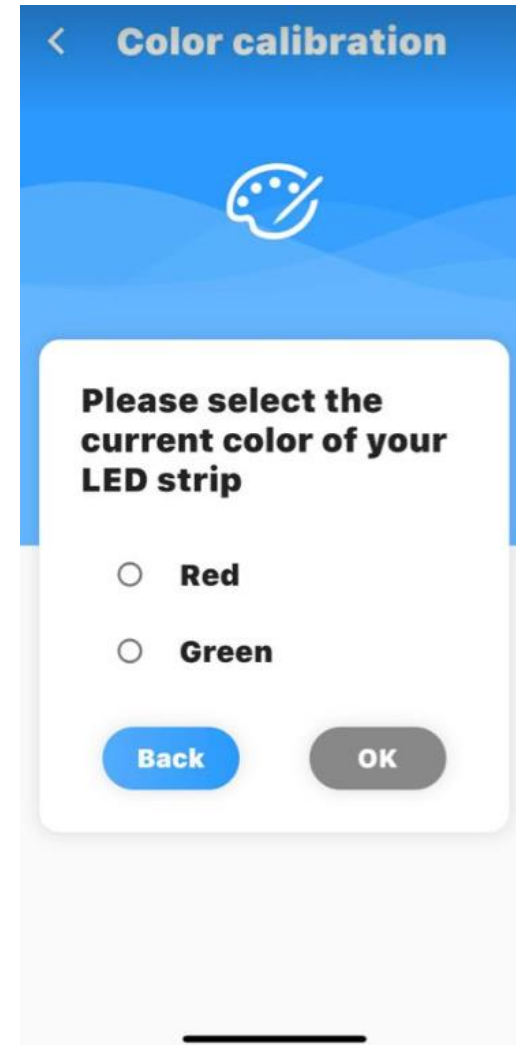
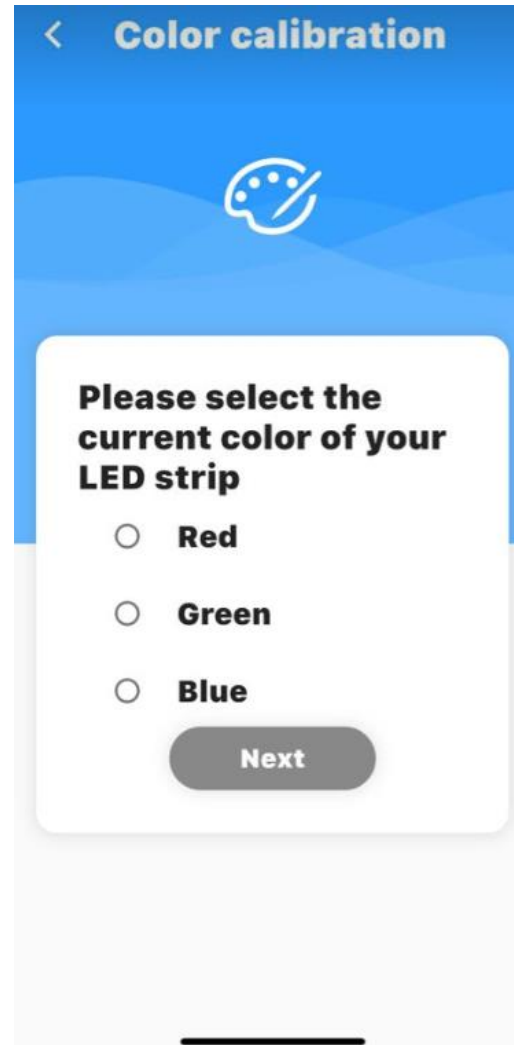
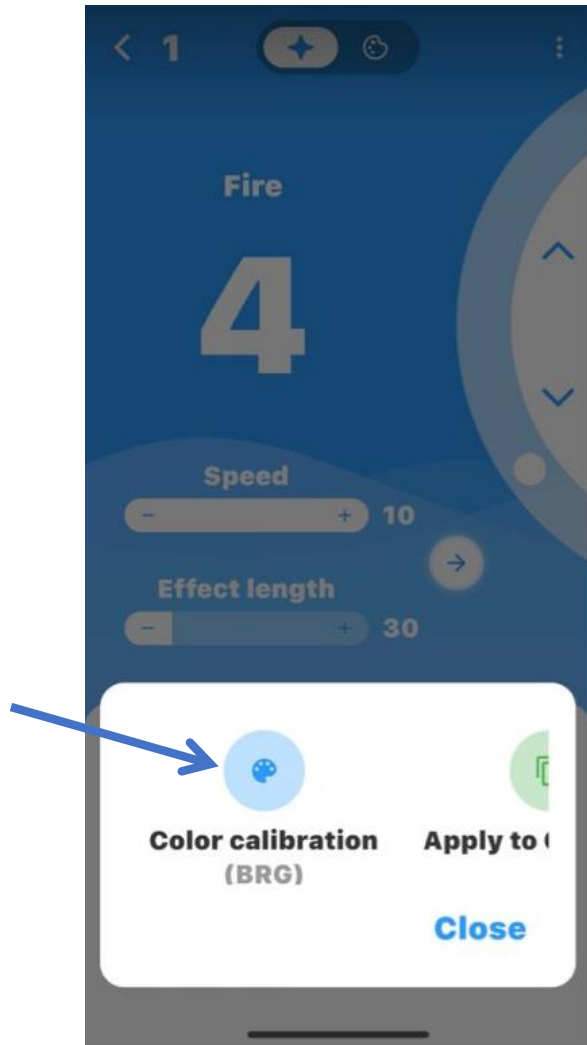
### 3. You can Re-name your device.



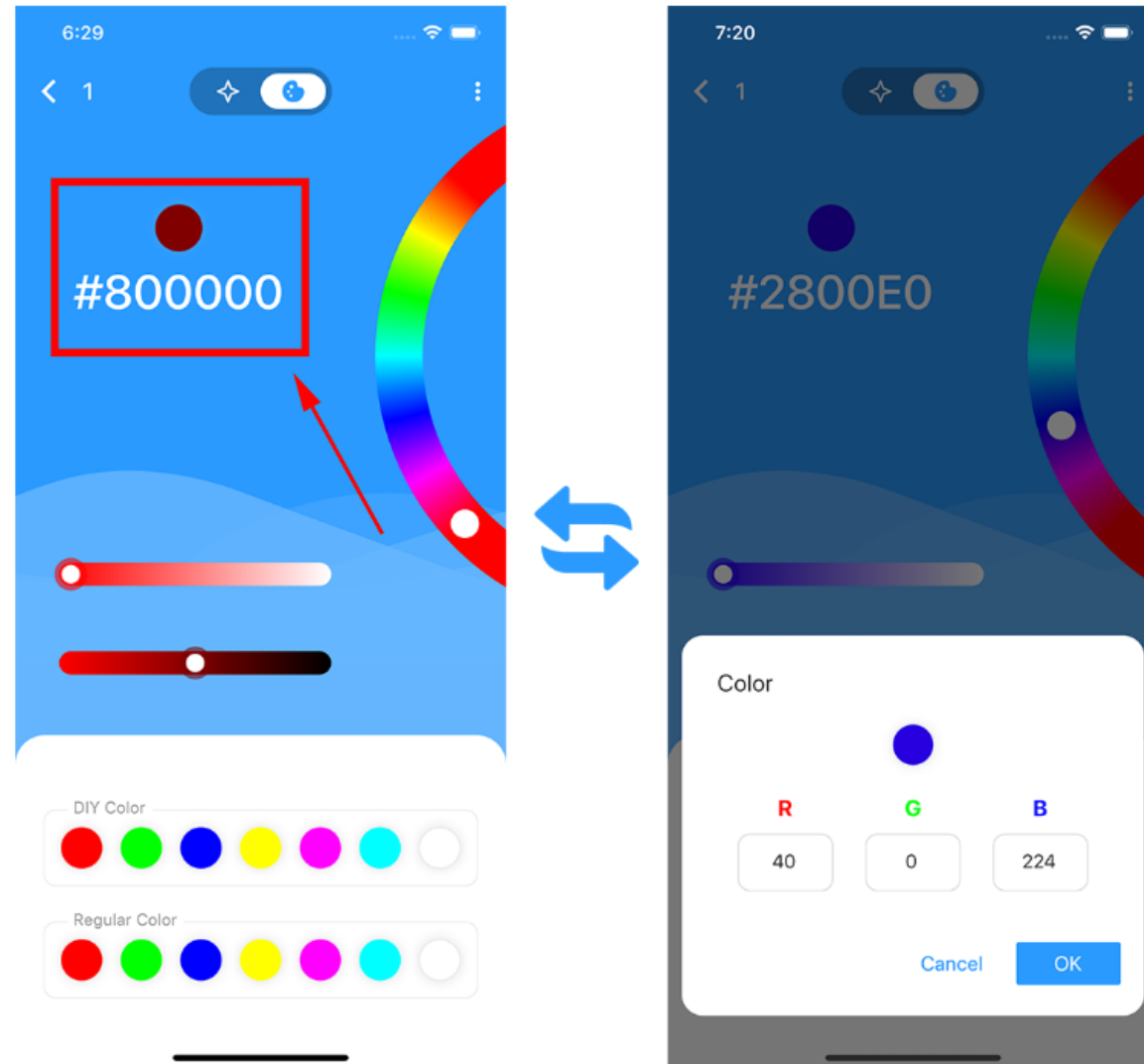
4. 36 built-in dynamic effects (1-24: general dynamic effects, 25-36: music effects) and solid color effect.



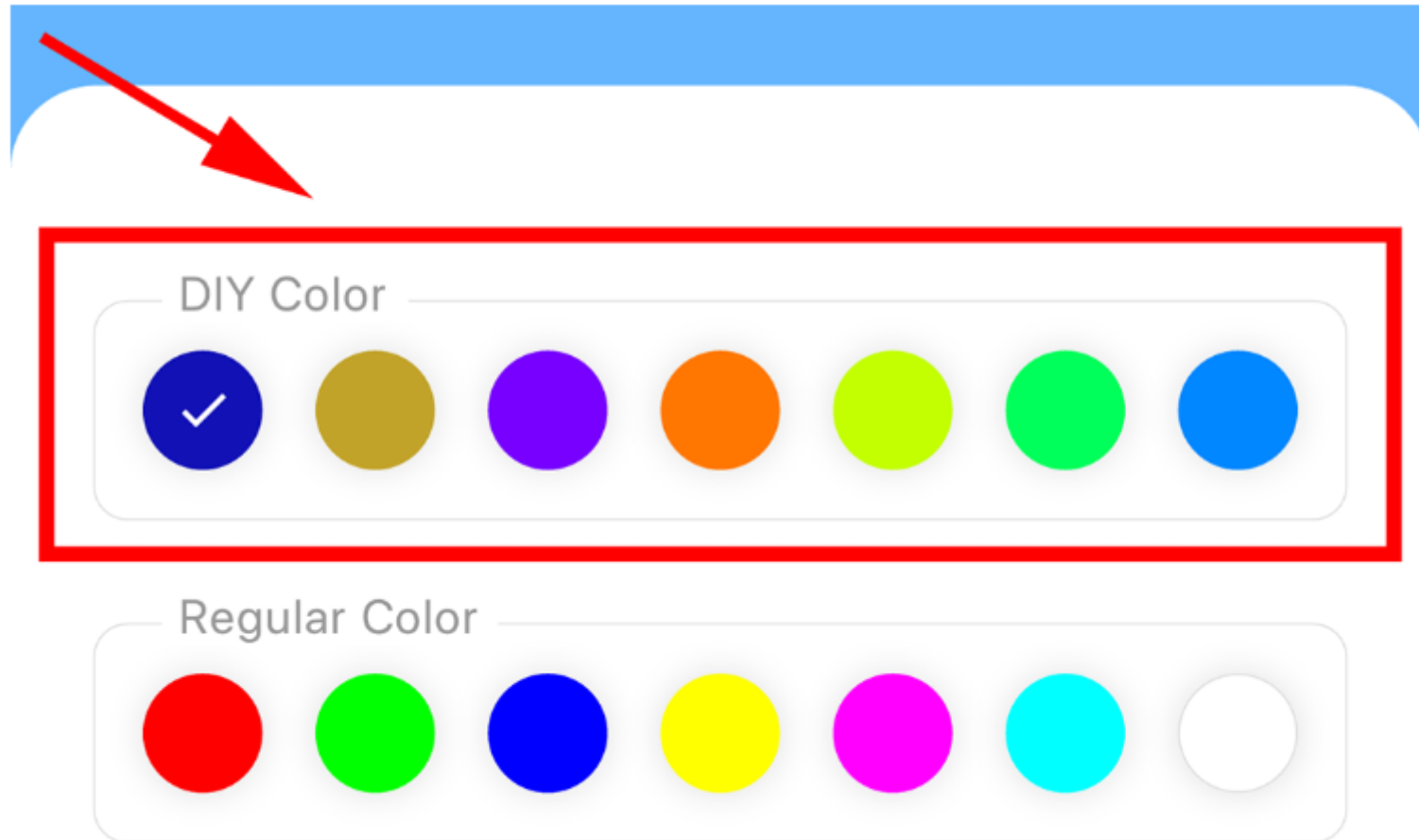
# 5. Setting Colors of leds Sync Both whips with the same Pattern



6. You can enter DIY, RGB value of the color directly in solid color effect,



7. You can save your favorite colors.

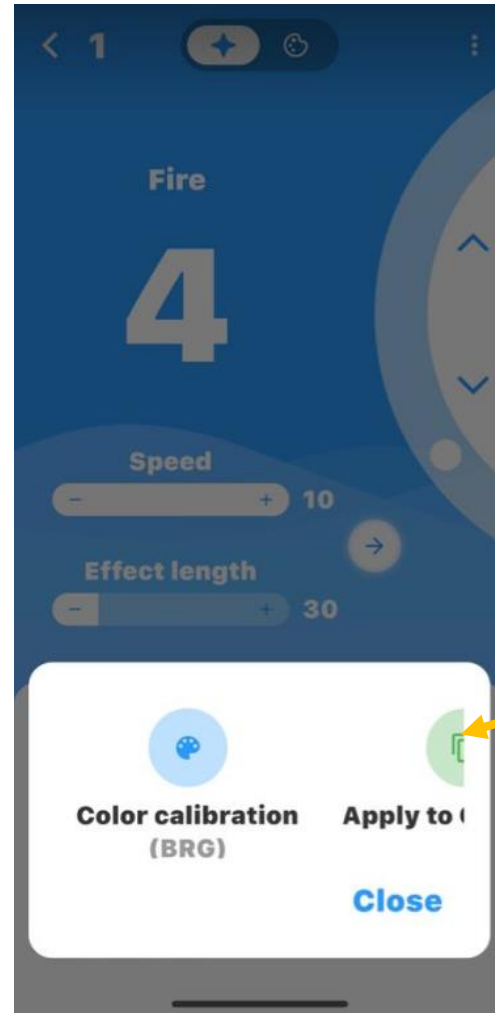




## 8. You Can Control Both Channels at the same time



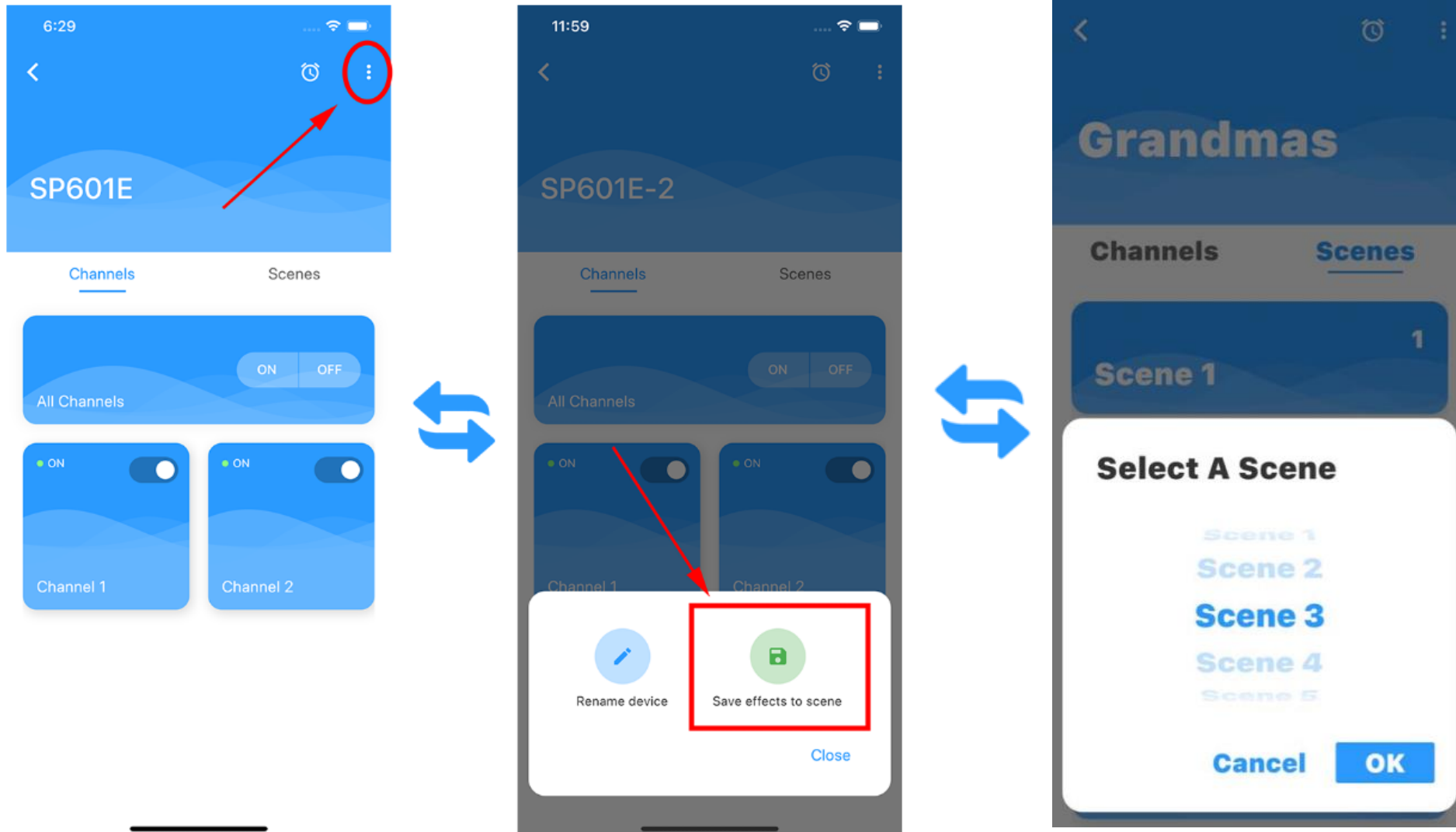
# 9. Setting Colors of leds Sync Both whips with the same Pattern



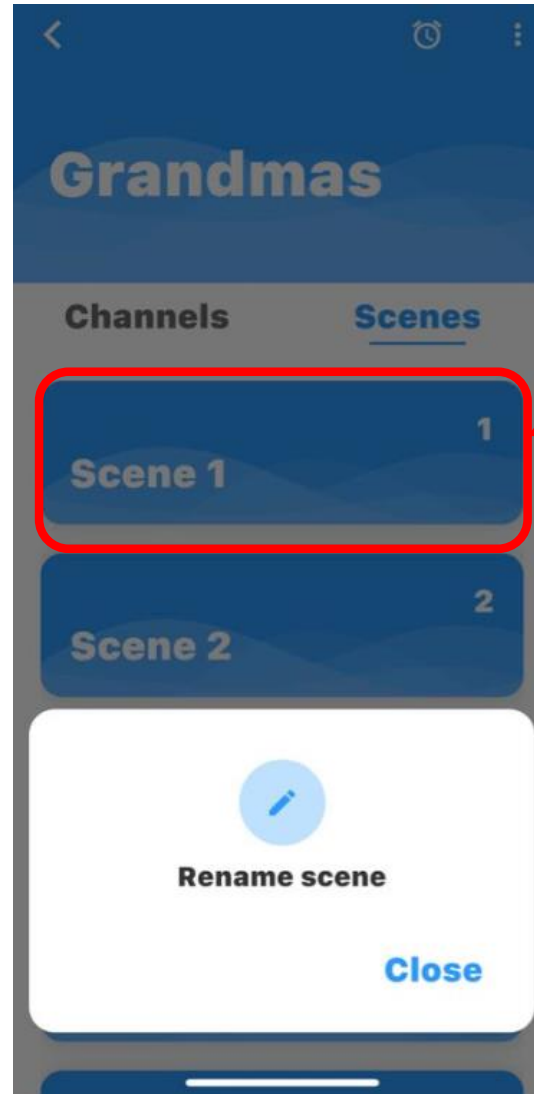
Use this Button  
to change other  
Whip to the same pattern

You can then save Pattern to a Scene

10. Save the current lighting effect settings to these scenes.



# 11. How to Rename a Scene



Push and hold until  
Popup Shows then rename

# Remote

