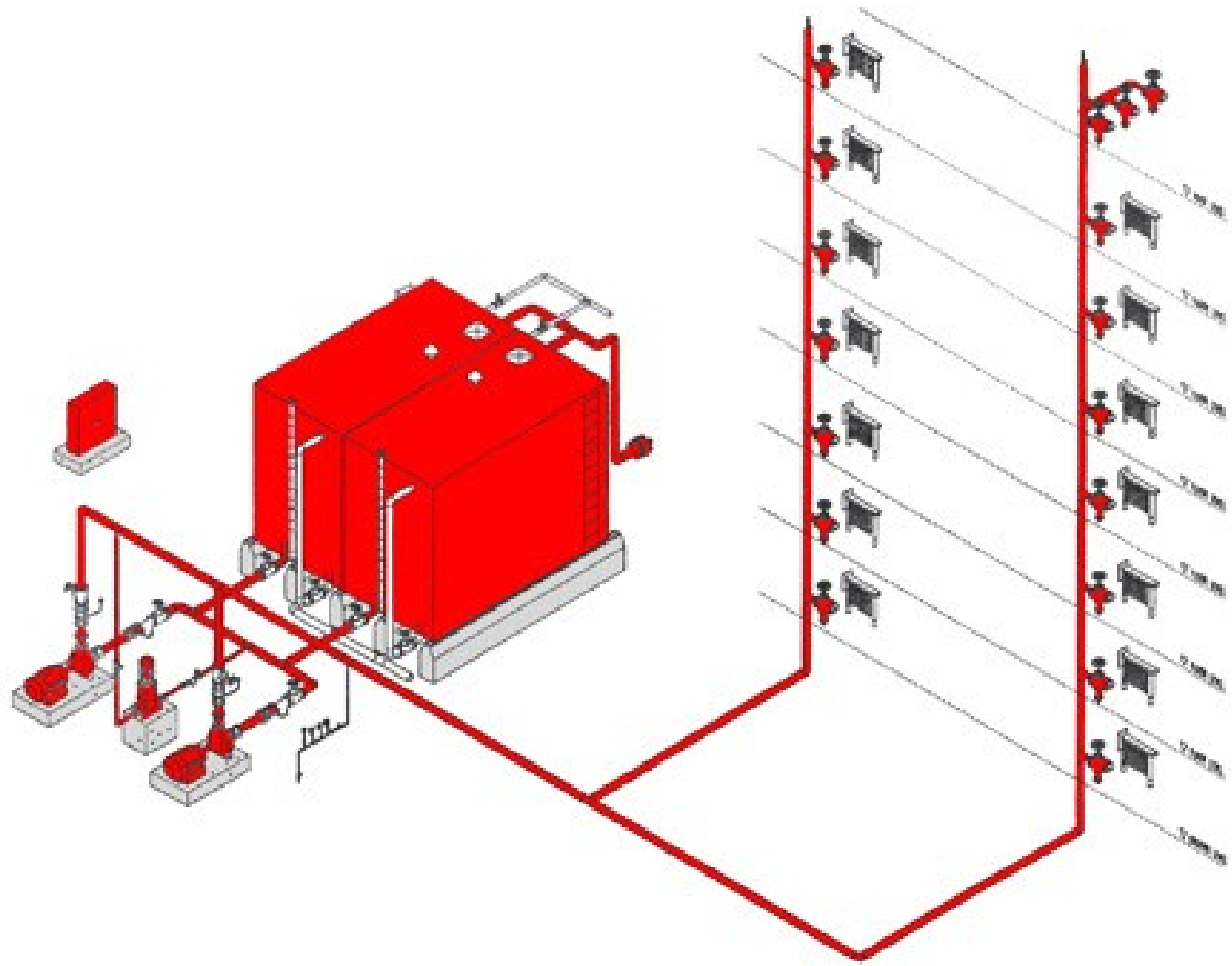
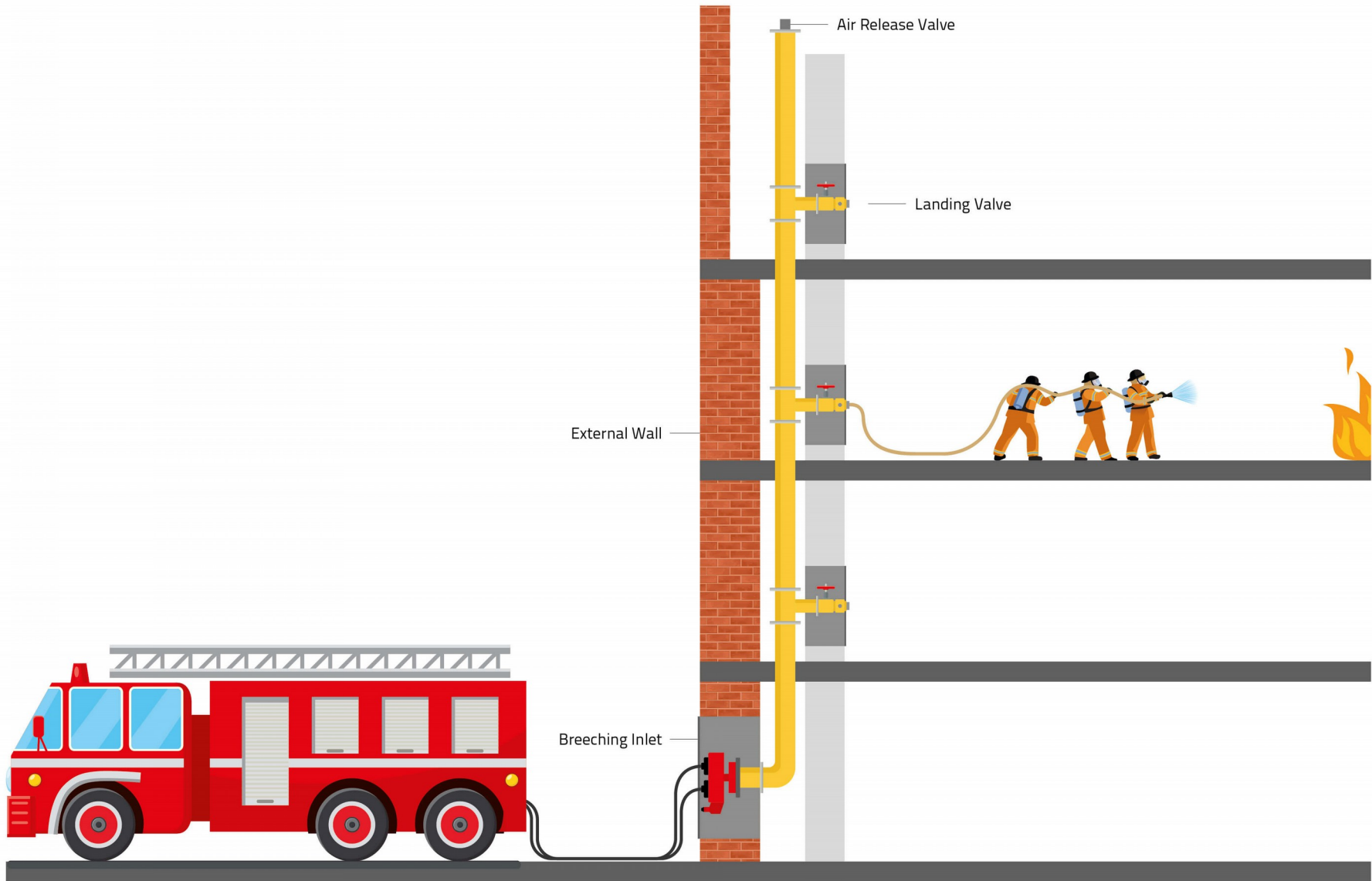
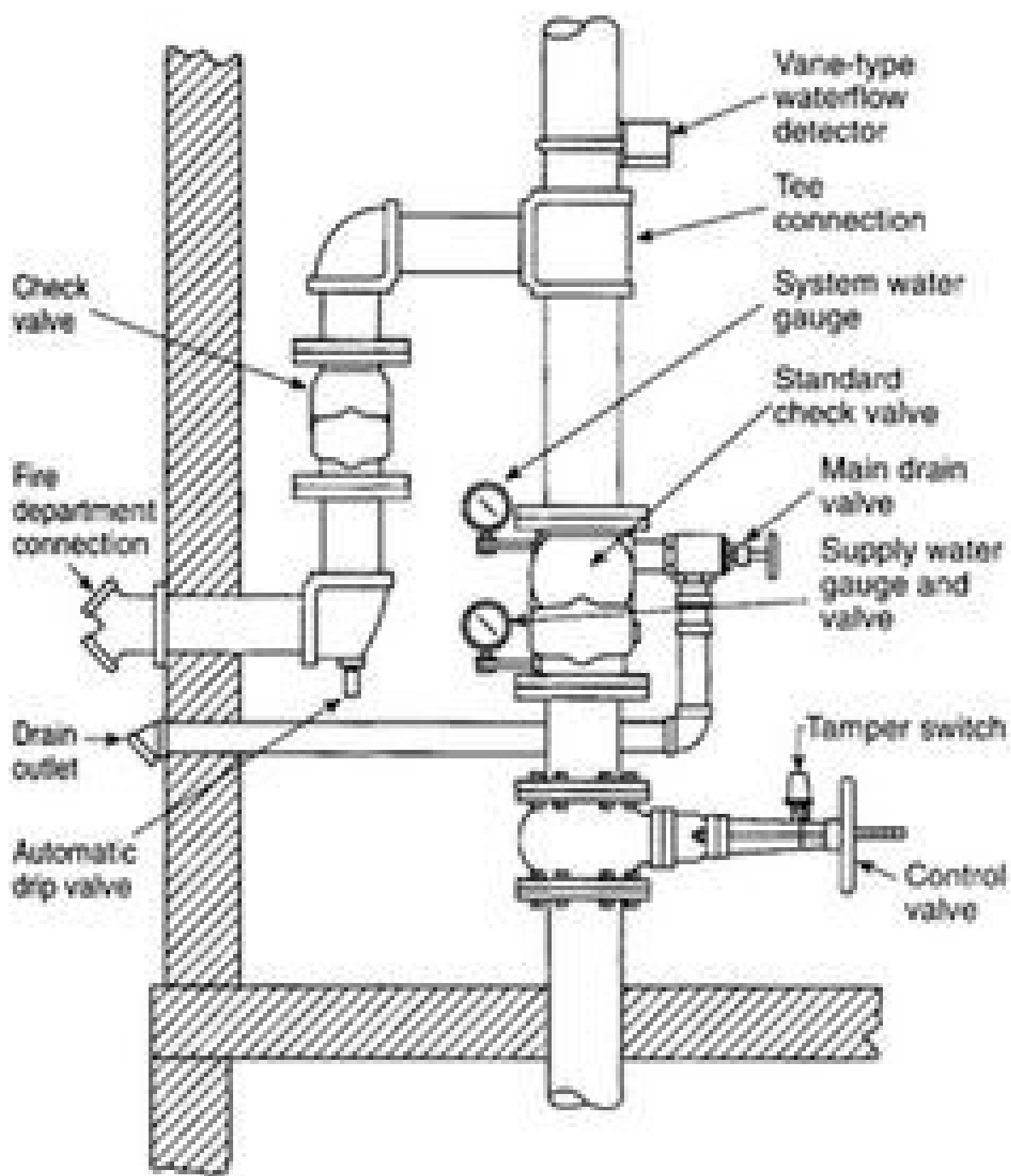


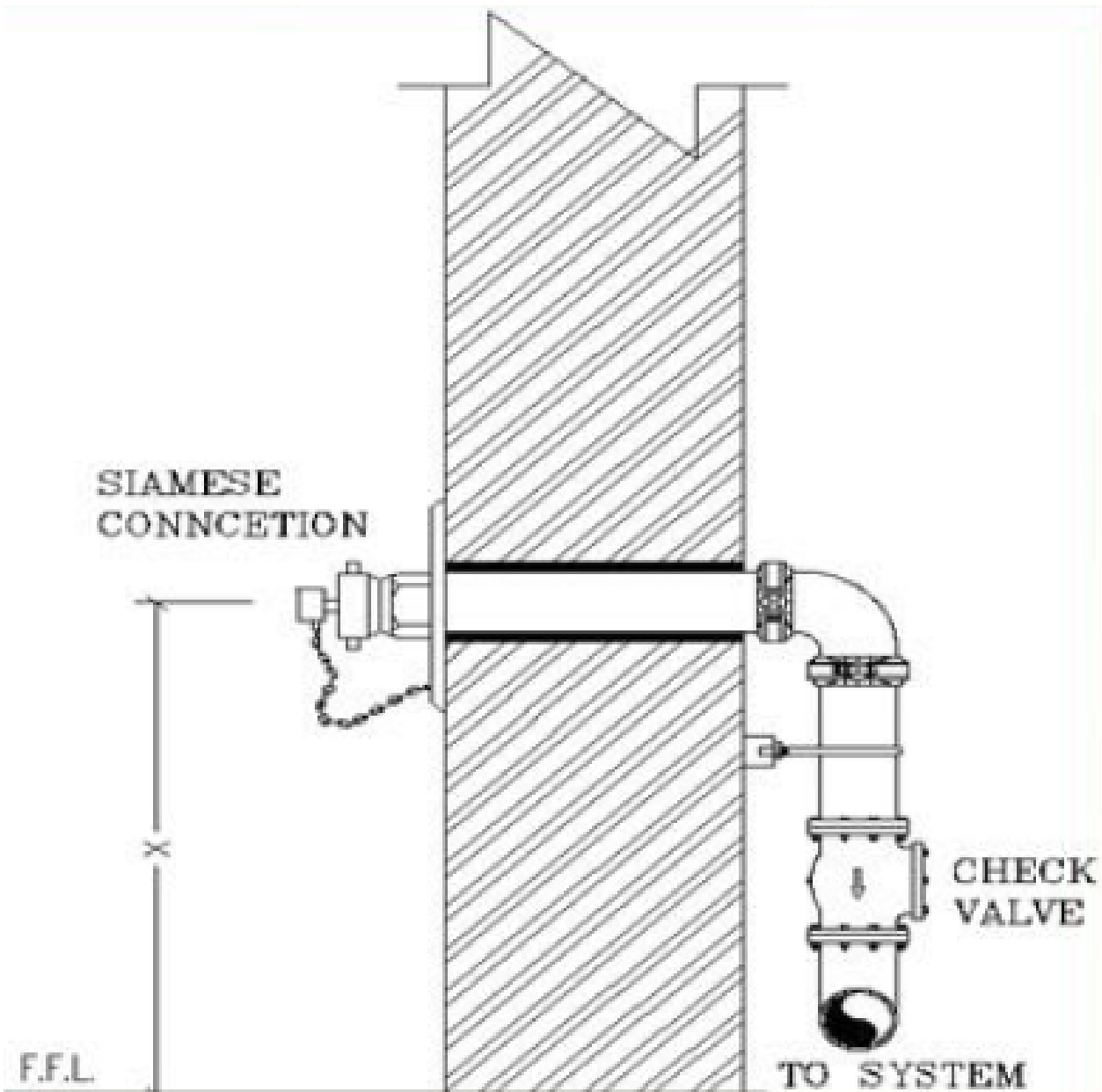
# Fire Department Inlet Connection Siamese Connection

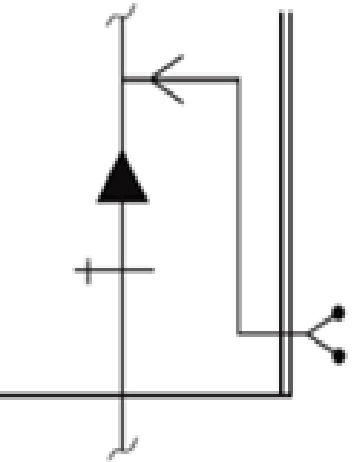




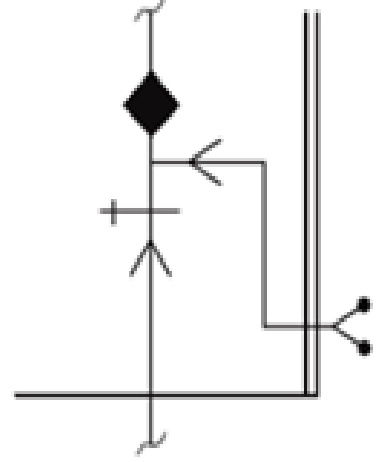




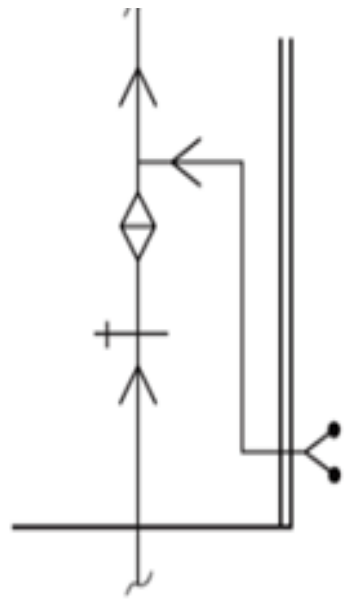




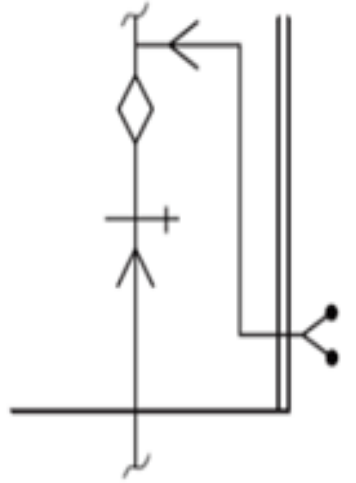
Wet pipe system



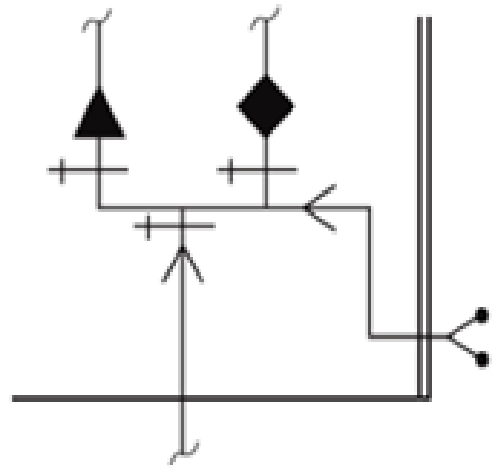
Dry pipe system







Preaction system






Deluge system



Wet pipe and dry pipe system

-  Check valve
-  OS&Y valve
-  Alarm valve
-  Dry pipe valve

-  Deluge valve
-  Fire department connection
-  Preaction valve



# Fire Department Outlet Connection Fire Hydrant (FH)



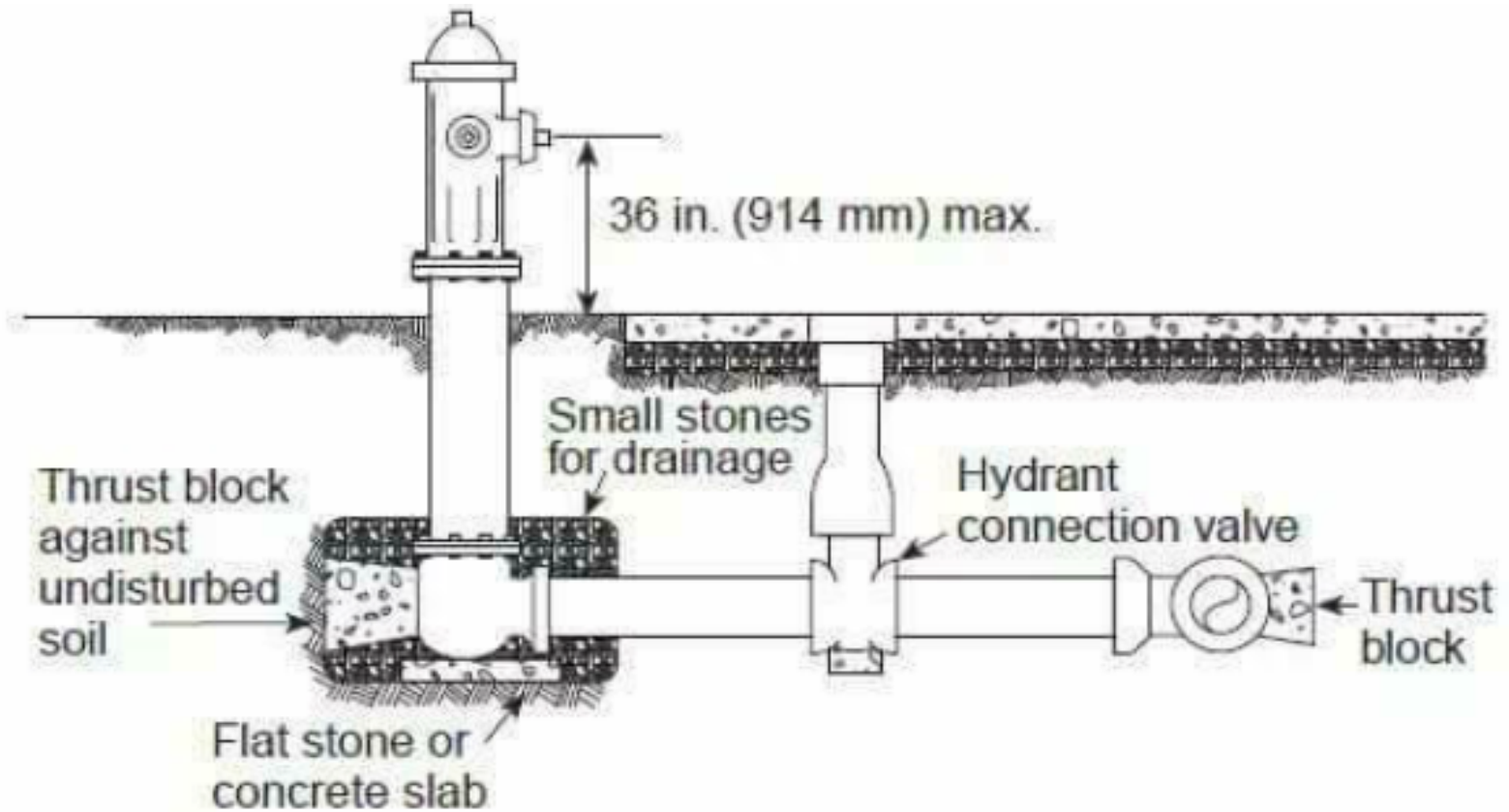
# Types of FH

- Non-Controllable FH
- Controllable FH
- Three Ways FH





# Installation



*FIGURE A.7.3.1(b) Typical Hydrant Connection with Maximum Height Requirement.*

# Color Code

Hydrant Class	Color	Flow
 <b>Class AA</b>	<b>Light Blue</b>	<b>1,500 gpm (5 680 L/min) or greater</b>
 <b>Class A</b>	<b>Green</b>	<b>1,000-1,499 gpm (3 785 L/min to 5 675 L/min)</b>
 <b>Class B</b>	<b>Orange</b>	<b>500-999 gpm (1 900 L/min to 3 780 L/min)</b>
 <b>Class C</b>	<b>Red</b>	<b>Less than 500 gpm (1 900 L/min)</b>

## Maximum permissible loss of head for hydrants

No. of Outlet Nozzles	Nominal Diam. of Outlet Nozzles		Total Flow From Outlet Nozzles		Max. Permissible Head Loss	
	<i>in.</i>	<i>(mm)</i>	<i>gpm</i>	<i>(m<sup>3</sup>/h)</i>	<i>psi</i>	<i>(kPa)</i>
1	2 1/2	(64)	250	(57)	1.0	(6.9)
2	2 1/2	(64)	500*	(114)	2.0	(13.8)
3	2 1/2	(64)	750*	(170)	3.0	(20.7)
4	2 1/2	(64)	1,000*	(227)	4.0	(27.6)
1	4	(100) or larger	1,000	(227)	5.0	(34.5)

\*Approximately 250 gpm (57 m<sup>3</sup>/h) from each outlet nozzle.