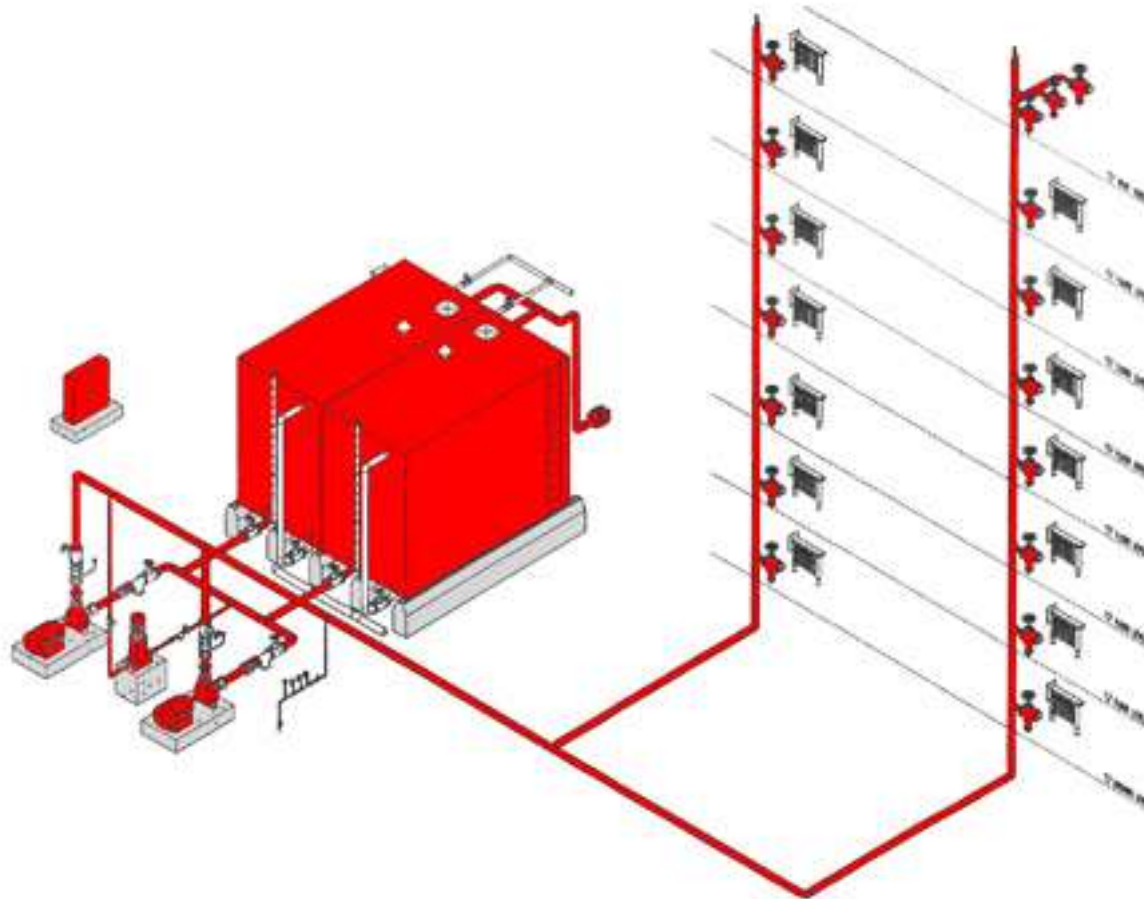


Fire Hose Cabinet (FHC) Standpipe System



Components of FHC

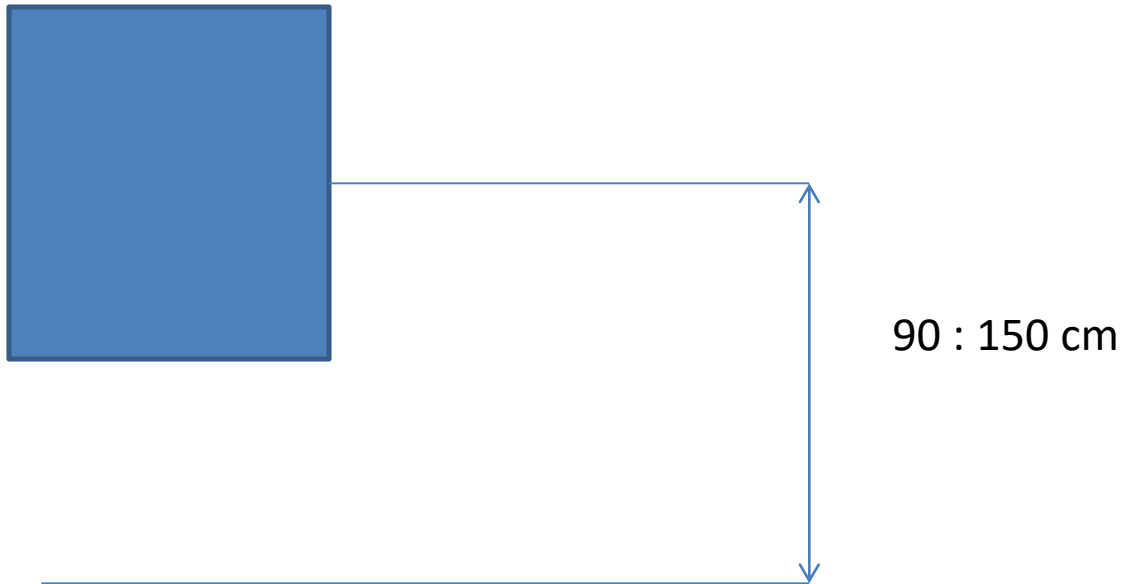
1. Cabinet
2. Hose
3. Angle Valve
4. Discharge Nozzle
5. Fire Extinguisher (Optional)



Cabinet



Location of FHC



Fire Hose



Hose Arrangement Inside Cabinet

1- Hose reel type

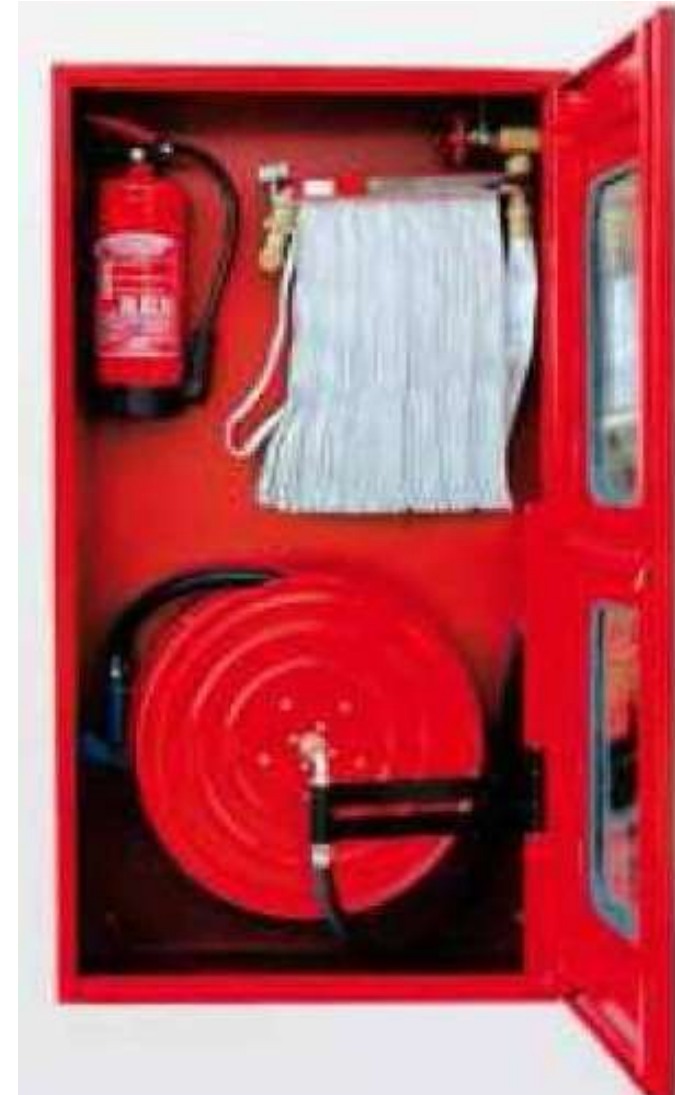


2- Hose rack type



Classes of Standpipe System

- Class 1
- Class 2
- Class 3



Item	Class 1	Class 2	Class 3
Hose Size	2.5 "	1 " or 1.5 "	2.5 " or 1 "
Min. Press.	6.9 bar	4.5 bar	6.9 bar for 2.5" and 4.5 bar for 1.5 "
Min. Flow Rate	250 gpm	100 gpm	250 gpm
Pmax	12 bar	6.9 bar	6.9 bar
Diam. Of Pipe	2.5 "	1 " or 1.5 "	2.5 " or 3 " for 2.5 " 1 " for 1.5 "
Description
Travel Distance	45.7 m	39.7 m for 1.5 " 36.6 m for 1 "	30 m

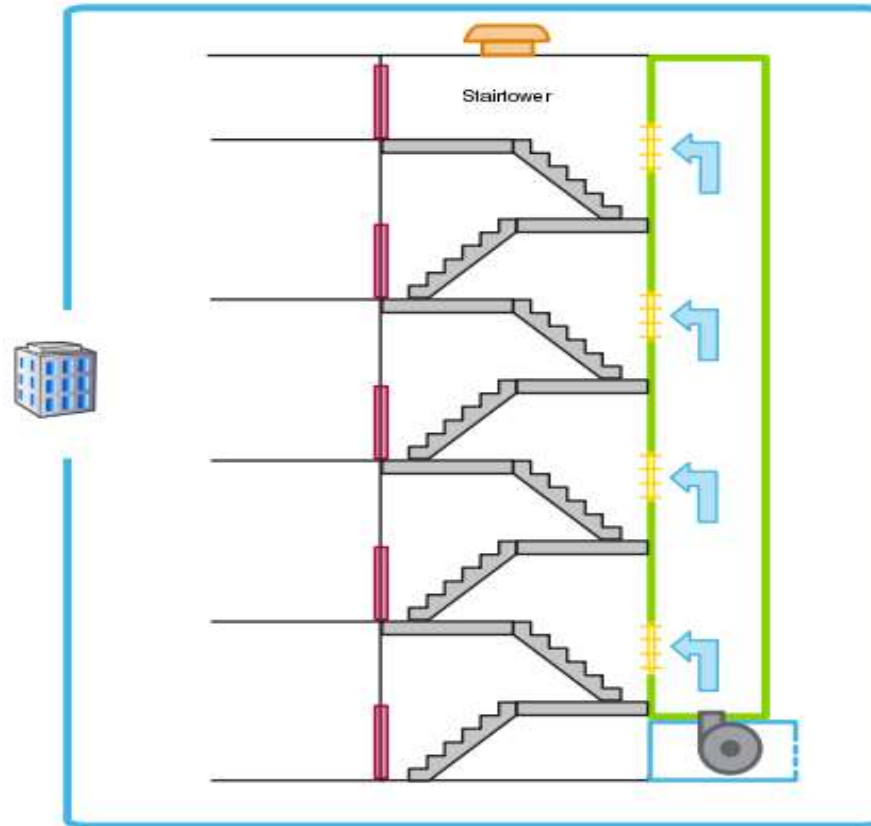
Restricted Valve



Basement Ramp

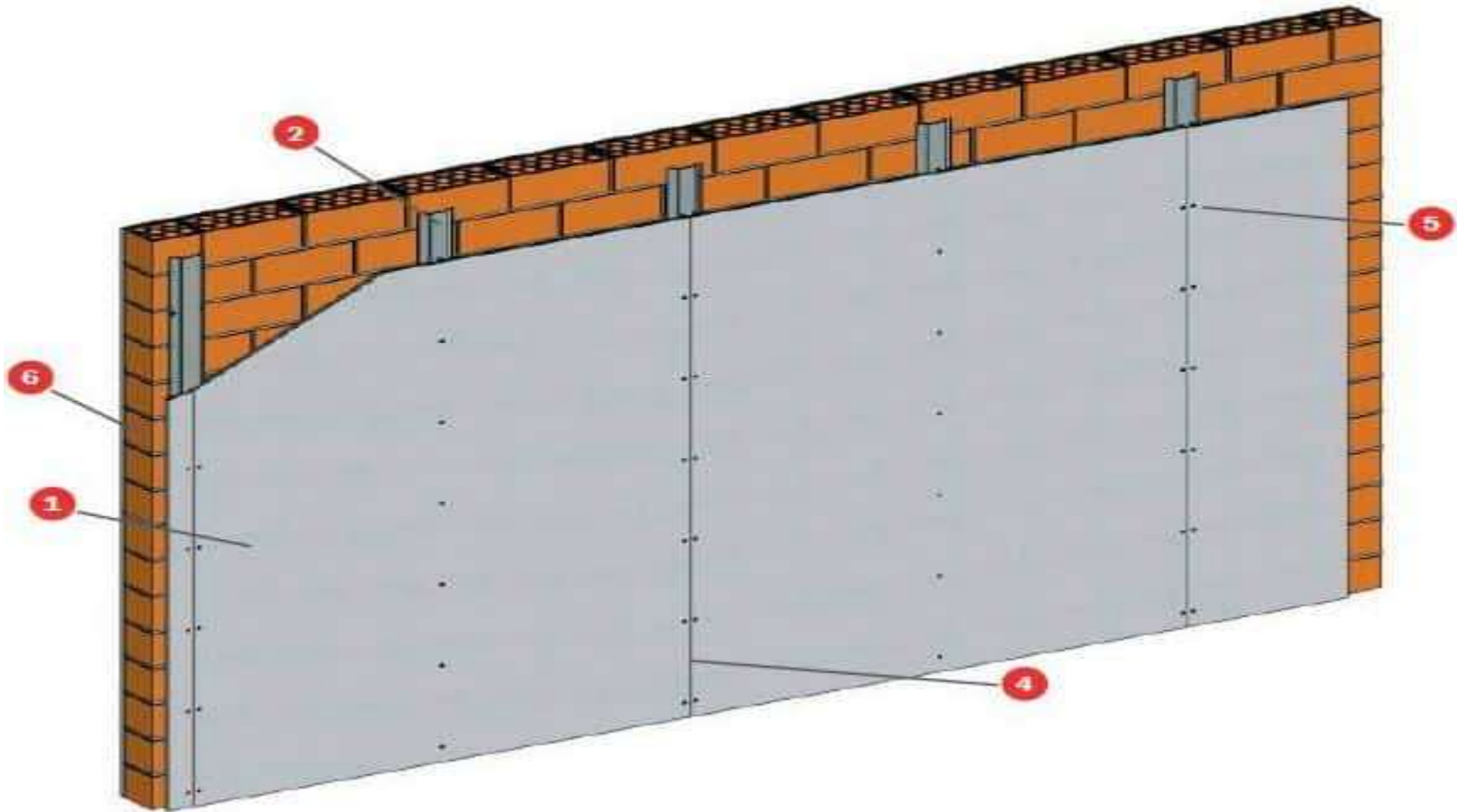


سلالم الهروب

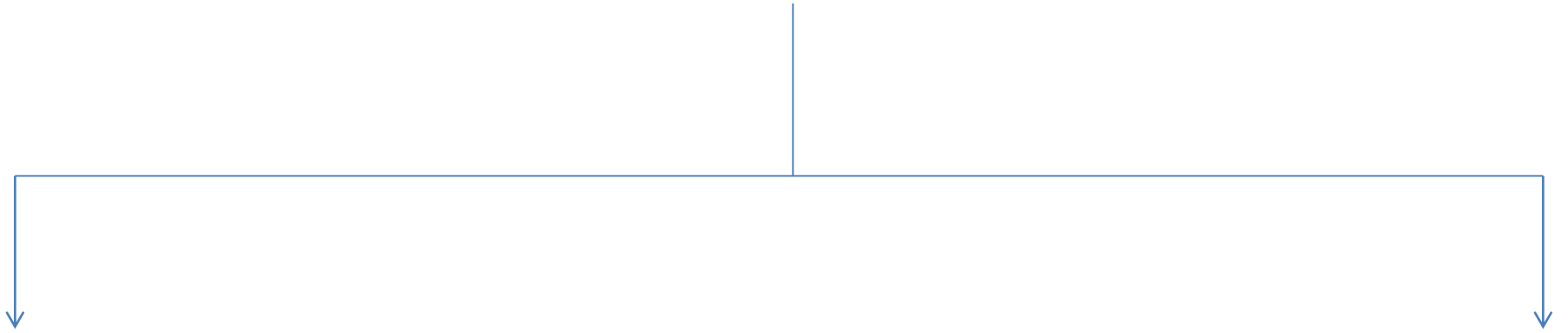


-  Building
-  Fire rated door
-  Air supply fan
-  Pressure vent
-  Exhaust/Ventilation
-  Air supply duct

Fire Rated Wall

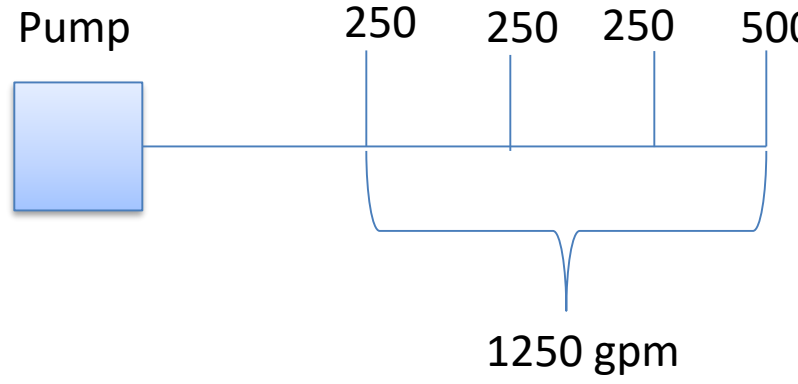
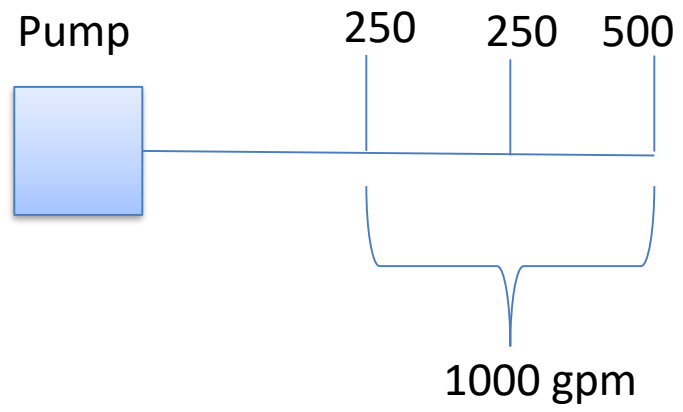


Building

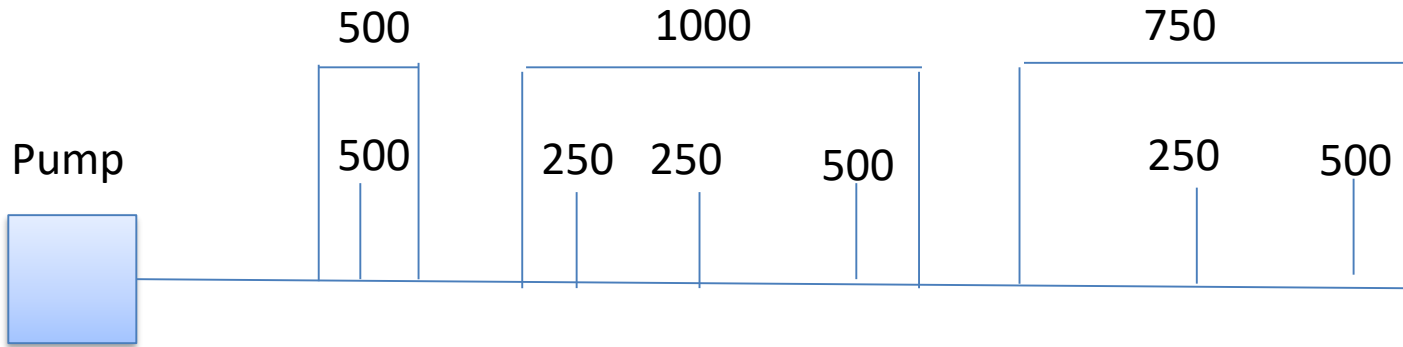


Through Out

Partially



Through Out



Partially

