



**PLASTBAU SPECIALIZED
CONTRACTING CO. LTD.**



FACADE SPECIALIST FOR EIFS & INSULATING SYSTEM APPLICATOR

www.plastbauarabia.com



ABOUT US **1**

WHY PLASTBAU EIFS? **2**

Contents

U-VALUE **2**

OUR SERVICES **3-5**

- **EIFS** External Insulation Finishing System
- **GRP** Glass Fiber Reinforced Polystyrene Profiles
- **DFE** Decorative Façade Elements
- **OFL** Outdoor Furniture — Landscaping
- **IBFS** Insulated Block-work Finishing System

ENVIRONMENT & SAFETY **6**

CERTIFICATIONS **6**

OUR EQUIPMENT **7**

MAJOR PROJECTS **8**





Plastbau Specialized Contracting Co. Ltd. is dedicated to perform EIFS (Exterior Insulated Finishing Systems) and insulated wall claddings based on polystyrene and other insulating materials. Within the Plastbau family, we specialize in manufacturing decorative profiles and GRP-elements finished to perfection in your project as per the design specification.

About Us



Our major participation in the largest EIFS - Project in the Middle East with more than 300,000 m² completed on-time to the full satisfaction of our client makes us the most sought-after company in building insulation projects.

Plastbau Specialized Contracting has a policy that all work will be performed in a safe manner in compliance with Occupational Safety and Health Administration. All of our employees follow strict safety rules and directives and use personal protective equipment to assure the job is done safely and right the first time.

Plastbau Specialized Contracting approaches every residential and commercial construction project with quality, care and is committed to total client satisfaction. Over the years, we have built a solid reputation based on trust, competence, and competitive pricing.

Our goal is to keep construction projects running smoothly from start to finish and completing them on-time and within budget, with the least amount of disruption to your household.

Quality control is important to the success of every building project. Our Project Managers and Supervisors have a minimum of five years' experience and are available at any time throughout the duration of the project to answer questions or address concerns.

We understand that our workforce is a vital part of our operation and we employ only the best and dedicated staff with a broad range of skills and experience in the field of construction and building insulation.



Why Plastbau EIFS?

- Heat shield
- Energy savings up to 60%
- Supports alternative cooling technologies
- Seamless thermal insulation
- Highest impact resistance
- Selected components for highest durability
- Certified systems & applicators only
- Decorative
- Versatility
- Experience
- Local availability

Advantages of Plastbau EIFS System

- EIFS with PLASTBAU promote energy savings from 35–60% for cooling climates, depending on the chosen insulation slab (white or silver) and the chosen thickness of the insulation.
- Exterior Insulation Finishing Systems (EIFS) perform better than stucco, concrete block, fiber cement siding, and brick in energy efficiency because the insulation is SEAMLESS. Thus no moisture intrusion and always controlled indoor temperature due to the use of the block-work as cool temperature storage, distinguish EIFS as an excellent choice in mixed, coastal, and hot & humid climates.

THERMAL PROTECTION

$U = 0,31 \text{ W/m}^2\text{K}$



MOISTURE PROOFING

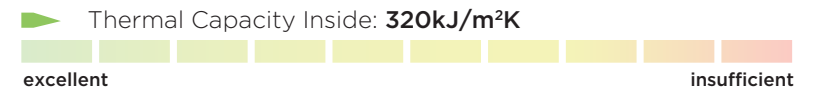
No Condensate



HEAT PROTECTION

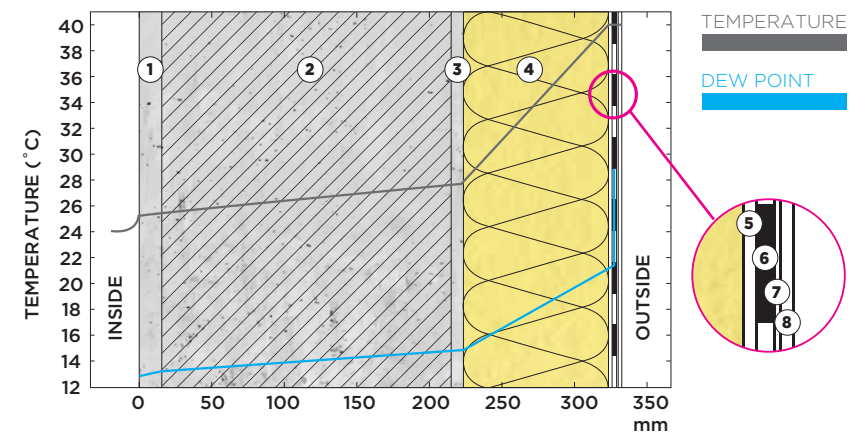
Temperature Amplitude Damping: >100

Phase Shift: **Non Relevant**



U-Value

TEMPERATURE PROFILE



- | | |
|--|--|
| 1 Cement Render (15 mm) | 5 PLASTBAU Adhesive/armour render (4 mm) |
| 2 Hollow Blocks (200 mm) | 6 PLASTBAU Mesh |
| 3 PLASTBAU Adhesive/armour render (8 mm) | 7 PLASTBAU Adhesive/armour render (2 mm) |
| 4 PLASTBAU Neopor Grey 032 (100 mm) | 8 PLASTBAU Mineral resin render (8 mm) |

EIFS - External Insulation Finishing System

The EIFS insulation system of the external building envelope is the most common type for thermal insulation of new low and mid-rise buildings. It can save up to 50% of energy costs. The business unit will provide the entire system covering several components. Refurbishments conducted with EIFS will add more value to the owner's portfolio than demolition and replacement.

SABIC Compound executed by J&P in Riyadh received Plastbau EIFS - 10cm on 325,000 m². Round-shaped corner elements were produced on-site using 3D cutting equipment.



Our Services

Refurbishment of KFUPM Dhahran with Architectural Elements finished in a seamless monolithic appearance made from GRP.



DFE - Decorative Façade Elements

DFE is designed to alter the shape of regular built structures in order to generate a complete individual outlook of building units and to provide insulating properties at the same time. The system is developed especially for refurbishment of existing units. All system components are manufactured using Polystyrene as structural element. The target is to achieve a complete new and modern outlook of buildings (KFUPM refurbishment, SIPCHEM Building) by taking into account energy insulating considerations to prevent energy losses at the same time. All elements fulfill the strict fire standards of non-loadbearing façade cladding systems (NFPA 285).

GRP - Glass Fiber Reinforced Polystyrene Profiles

GRP is the economically justified replacement of nearly all GRC (Glass Fiber Reinforced Concrete) Profile applications. Decorative elements used to enhance building expression are commonly executed as so called "GRC". GRP achieve similar results at 30-40% lower costs and by 70% weight reduction.



We approach every residential and commercial construction project with quality, care and commitment.



OFL - Outdoor Furniture - Landscaping

Polystyrene in combination with high performance polymer modified mortars and high-end finishing solutions are used to serve as durable furniture and design elements for public and private applications. Due to its versatility in design and size, such elements are used as well for landscaping (artificial rock-formations, sculptures) purposes. CAD engineered structures using materials 100% manufactured in the proposed entity will be offered to the market.

Durable, fire-resistant and UV-resistant outdoor furniture in almost any possible design executed in GRP + Furttec



IBFS – Insulated Block-work Finishing System

The IBFS insulation system replaces common block-work by providing insulating building elements including all materials for external and internal finishing – the cavity in between the insulating material is filled with regular cast in-situ concrete. 50-60% energy saving may be achieved. The system is suitable for new low and mid-rise buildings.

The Plastbau House can be visited and experienced live in Dammam 2nd Industrial City – ARAMCO Villa; and in Riyadh at the SABIC – Home of Innovation Cluster

Our Services

PIMH – Pre-engineered Insulated Modular Housing

PIMH is developed as self-sustainable Housing concept providing independent utility and wastewater management. It is designed to provide intermediate housing, workshop area, camp space, refugee homes, military housing and catastrophe mitigation and remote development units.



Energy Efficiency

The higher the R-value, the more effective a building's insulation. Correctly installed EIFS can be installed with EPS up to 30cm thick to achieve significantly higher R-values up to 60, which is 4-times more than what you can achieve with other claddings or insulated bricks or precast panels. Plus, by placing the insulation on the building exterior Plastbau Specialized Contracting eliminates thermal bridging that can increase energy efficiency of a building by reducing energy consumption by 50% and more.



Environment & Safety

Environment Friendly

The used materials are altogether utmost gentle to the environment as EPS is manufactured using steam and pressure only and the final product can be recycled after its life cycle and can serve for instance as light weight aggregate in fresh concrete applications.

Safety First

Plastbau Specialized Contracting is investing time and efforts to train its staff for safe installation of all systems according to OSHA and ARAMCO standards (certified Personal Protection Equipment - PPE). Plastbau Specialized Contracting is using safe and advanced equipment such as hot-wire cutters, continuous mixing systems, appropriate tools and its own special Scaffolding to deliver perfect quality with no time loss incidents.



Certification

Plastbau is approved and certified by SABIC and ARAMCO and has passed in combination with renowned System providers the NFPA 285 Fire Test for non-loadbearing façade claddings.

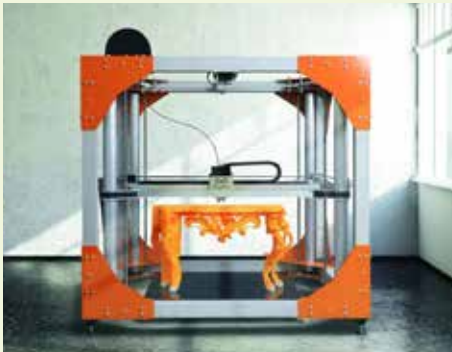
The silver board with its FSI of 20 and its SDI of 225 is Class A fire-rated.



Our Equipment

The best equipment combined with highly skilled employees and workforce is the backbone of our concept – designed to deliver long-lasting and superior systems and finishing textures to your project.

With our performance warranty we are committed to add real value to buildings. No compromise - Count on us.



3D Print Studio



Plastering Machines

ON-SITE

- **2,500 m² Patented Scaffolding**
- **Plastering Machines**
- **Continuous Mixers** maintaining always the correct mixing ratio
- **Hot Wire Cutters**
- **Mobile Generators**
- **2D On-site Workshop**
- **Specialized Tools**
(European Brand)
- **1 Testo Thermal Transfer Tester**
On-site testing of efficiency
- **1 Thermo Cam**
Discovery of thermal bridges

WORKSHOP

3D Print Studio

Our specialist draftsmen are designing individual prototypes for your project – customized and precisely shaped

3D Polystyrene 5-axis Cutter

for precise shaped and perfectly finished masterpieces in your project

Plural Component

Finishing Equipment

All staff are equipped with high quality (ARAMCO certified) PPE.



3D Polystyrene 5-axis Cutter

Al Nawras Compound

Septa Holding, Al Aziziah - 18,000 m²

Al Waseel Hills

SABIC, Riyadh - 335,000 m²

King Salman Science Oasis

ICC, Riyadh - 14,000 m²

Aramco Villa

Aramco, Dammam - 350 m²

Home of Innovation

SABIC, Riyadh - 800 m²

Nobu Restaurant

Qatari Diar, Doha, Qatar - 1,260 m²

KFUPM - Refurbishment

KFUPM, Dammam - 900 m²

Major Projects

INTERNATIONAL SIGNATURE PROJECT SELECTION PLASTBAU MANAGEMENT

The experience of the current Plasbau Contracting Management goes back to the early 90's and span over 1 million m² finished EIFS

Olof Palme Hof - Refurbishment

Municipality of Vienna, Austria, 76,000 m²

Schoenbrunn Castle - Refurbishment

Municipality of Vienna, Austria, 42,000 m²

Hotel Don Giovanni

Marco Polo Group, Prague, 12,000 m²

Nautilus Mall

Moscow, Russia, 9,000 m²



Al Waseel Hills, Riyadh, KSA



Home of Innovation, Riyadh, KSA



Nautilus Mall, Moscow, Russia



Nobu Restaurant, Doha, Qatar



Al Nawras Compound, Al Aziziah, KSA



King Salman Science Oasis, Riyadh, KSA



Schoenbrunn Palace, Vienna, Austria



**PLASTBAU SPECIALIZED
CONTRACTING CO. LTD.**

PO BOX 2384, Al Khobar 31952

Kingdom of Saudi Arabia

T: +966 13 812 1862 | +966 13 812 3434 **F:** +966 13 812 394662

M: +966 5 6257 5675 | +966 536 234 654 **UAE:** +971 56 205 7127