

BEFORE YOU GO BACK TO YOUR HOME COUNTRY



**LOVE UK
WORK EXPERIENCE**



WHEN YOU LEAVE ASK FOR P45



LOVE UK
WORK EXPERIENCE



P45 Part 1A
Details of employee leaving work
Copy for employee

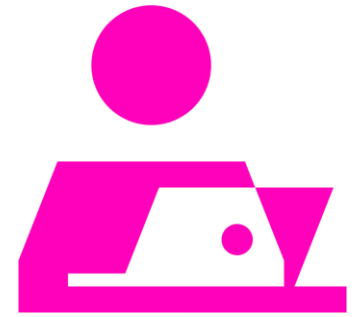
1 Employer PAYE reference
Office number Reference number

5 Student Loan deductions

WORK ABROAD

PAID HOSPITALITY WORK EXPERIENCE PROGRAM

BEFORE YOU LEAVE ASK FOR P45



Email
→



→



Your employer

P45

You

WORK ABROAD

PAID HOSPITALITY WORK EXPERIENCE PROGRAM

BEFORE YOU LEAVE ASK FOR U1



LOVE UK
WORK EXPERIENCE

“Ask for a statement of your UK National Insurance if you've lived or worked in the UK and are making a benefit claim in an EU or EEA country” HMRC



HMRC

Email →



→



You



Information we need to issue a statement of National Insurance contributions

Customer Operations
National Insurance Contributions Office
International Caseworker
Benton Park View
Newcastle upon Tyne
NE98 1ZZ
United Kingdom

WORK ABROAD

YOU NEED TO REQUEST IT FROM THE HMRC

CLAIM YOUR TAX BACK



LOVE UK
WORK EXPERIENCE

The Pay As You Earn (PAYE) system is a method of paying income tax and national insurance contributions. Your employer deducts tax and national insurance contributions from your wages or occupational pension before paying you your wages or pension. From Citizen advice



P.A.Y.E



You

TAXBACK



6 to 8 weeks

WORK ABROAD

PAID HOSPITALITY WORK EXPERIENCE PROGRAM



**LOVE UK
WORK EXPERIENCE**

FREQUENTLY ASKED QUESTIONS

PAID HOSPITALITY WORK EXPERIENCE PROGRAM



F.A.Q



LOVE UK
WORK EXPERIENCE

<https://www.love-uk-workexperience.co.uk/faq-frequently-asked-questions>

WORK ABROAD

PAID HOSPITALITY WORK EXPERIENCE PROGRAM



**LOVE UK
WORK EXPERIENCE**

CONTACT

- EMAIL: cv@love-uk-workexperience.co.uk
- Telephone: 00442071579903
- Book a call back: <https://calendly.com/contact-788>