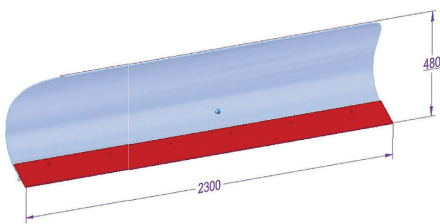


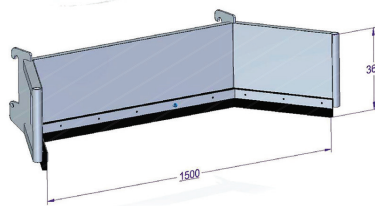
PUSHER

The optimal solution for feed approximation and manure shoveling

- ✓ High fuel economic diesel motor – two options:
One cylinder motor max 12 HP
Two cylinder motor max 19 HP
- ✓ Significant saving in operational cost.
- ✓ Feed agitating, shoveling and approximation to right and left.
- ✓ Manure shoveling of holding pens and walking area.
- ✓ Quick front attachments for tools replacement.
- ✓ Hydrostatic drive system, and hydraulic easy operate service system.
- ✓ Hydraulic operate steering system.
- ✓ Four meter steering circle.
- ✓ High ground clearance and good maneuverability over rough terrain.
- ✓ Optional: Roof and front windshield.
- ✓ Front and rear led working lights.
- ✓ Maximum driving speed: 12 Km/h.
- ✓ Driving license is not required (depend on local laws)



Feed shovel



Manure scraper

