

Condition Monitoring

Reliability – a key factor to your success!

Send A M

Reliability of rotating machinery is vital for your production efficiency, safety and profitability!

MonoDAQ permanent condition monitoring solutions will help you to plan your maintainace cycles well in advance, keeping your rotating machinery in perfect shape and enabling you to achive your business goals!

Prevention is better than cure!

Unreliable asset can fail in an unpredictable way causing decrease in environmental, health and safe events possibly ending with slow downs. Finally an unavailable assest can stop production costing millions of dollars, and in some cases, even losing customers. But what we can do in order to avoid them? The answer is Permanent Machine Condition Monitoring system. Every critical asset in your company should have installed a permanent condition monitoring system to measure and report the health of the machinery and plan the regular maintenance cycles well in advance.

MonoDAQ CBM solution



- Low noise vibration and temperature measurement solution
- 10kHz bandwidth, 24 bit resolution
-

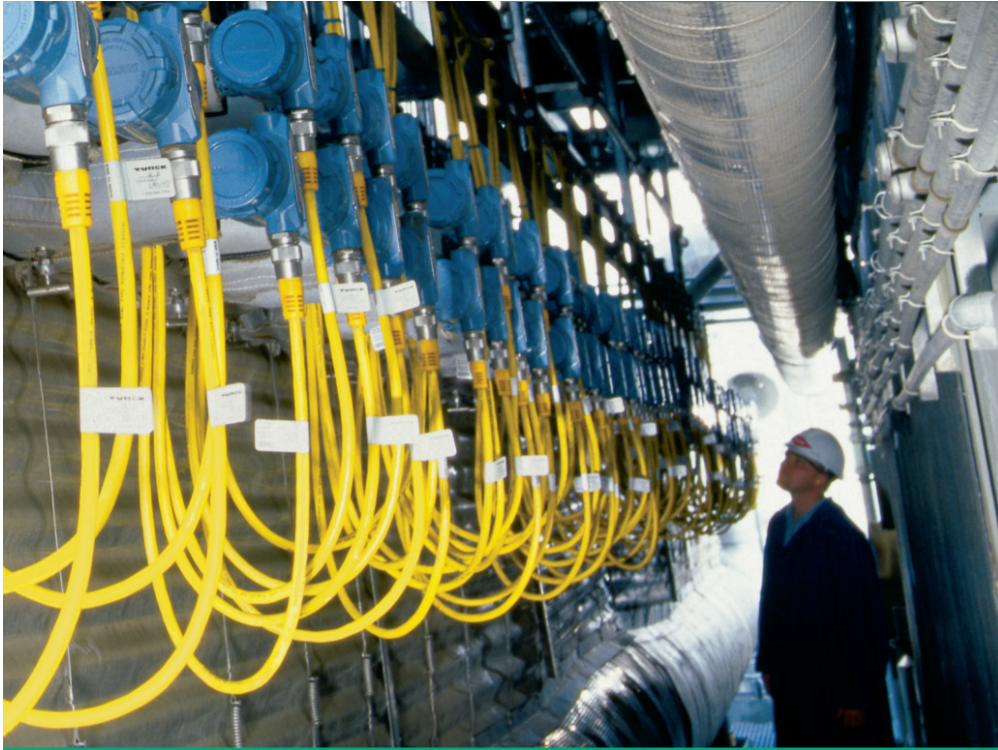
[LEARN MORE](#) about **MonoDAQ-E-gMeter10k**

MonoDAQ-E-gMeter 10k in ACTION



Reducing Downtime of a Yankee Motor and increasing Profits by 150k EUR/year

[LEARN MORE](#) about **Monitoring Yankee motor**



Improve reliability with Permanent Condition Based Monitoring solutions

Every asset has its own life cycle depending on installation process, components durability, maintenance cycles, environment in which they operate... Due to many factors it is very difficult to understand when an asset will fail just by doing periodic monitoring cause it is vulnerable to sudden changes and to human errors.

The only way to detect all possible potential issues is by using Permanent Condition Based Monitoring.



Is permanent Condition Based Monitoring an economically viable solution?

It wasn't so far. However big advances in technologies with reducing costs and improving performance gave a spin to new permanent condition monitoring solutions and opened new doors to massive CMB integrations.

Why choosing MonoDAQ permanent CBM solution?

1. Easy to mount and integrate

- 3 simple steps: Screw the sensor on the monitoring asset, connect the device and start!
- Single ETH cable for synchronisation, data transfer and power
- Enables multiple devices to be

2. Makes maintenance team life easier

- focus only on critical assets from maintenance point of view,
- plan asset maintenance in advance,
- remote troubleshooting possibility

3. Offers real-time, 24/7/365 continuous monitoring of all assets

4. Single stop, all in one solution - composed of sensor, data acquisition device and Software

5. Predictive maintenance software available on demand

6. The best price/performance Permanent Condition Based Monitoring solution available on the market.

According to Asdza Nodleehe, Engineering & Maintenance: Prevention Is Better Than Cure, Oil & Gas IQ, October 2011: »Production capacity is lost to as much as 5% every year as a result of unplanned shutdowns«.

Already small fixes/improvements in your production, due to the use of very sensitive MonoDAQ permanent CBM solution, will return your system investment.

MonoDAQ CBM solution



- Low noise vibration and temperature measurement solution
- 10kHz bandwidth, 24 bit resolution
-

LEARN MORE about
MonoDAQ-E-gMeter10k

MonoDAQ-E-gMeter 10k in ACTION



**Reducing Downtime of a Yankee Motor
and increasing Profits by 150k EUR/year**

LEARN MORE about
Monitoring Yankee motor