

# DeepEye™ EVS100

## 2D VIDEO ENDOSCOPY SYSTEM



- **Fog-proof Function**
- **Excellent Image Quality**
  - FULL HD (1920\*1080P)
  - Image enhancement algorithm
  - Digital zoom: 1X~3X
- **Integrated Design**
  - Built-in video recording and picture capturing
  - Built-in light source ,no external light source and fiber cable
  - All system functions are controlled with the laparoscope handle

### Catch What You've Missed

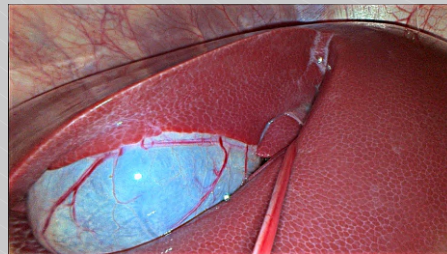
DeepEye™ 2D Video Endoscopy System provides world-leading compact and portable system with Fog-proof Capability. Thanks to its integrated design, the system brings more operation convenience, OR space-saving, and lower maintenance cost.

## Specification of DeepEye™—Processor

Items	Specification
Resolution	1920X1080P FULL HD
Video output port	2X Display Port, 1X HDMI, 2X DVI-D
Control port	2X USB for keyboard and mouse, 1X Ethernet
Video export port	Export recorded video from Processor to U disk
Built-in Storage	Up to 10 hours FULL HD video clips
Frame rate	60 frames per second



## Unmatched Fog-proof Function

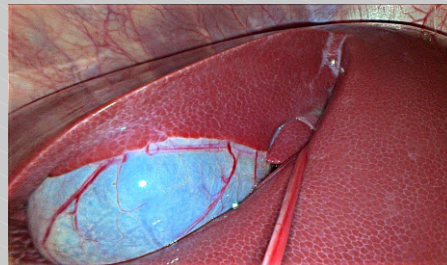


Ultraclear view with DeepEye™ Fog-proof Function

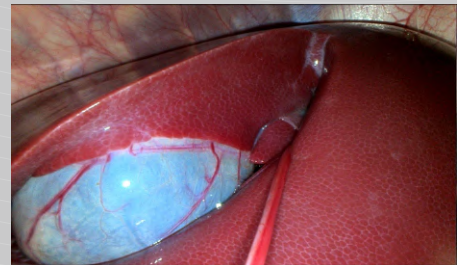


Conventional Laparoscope

## Unique Image Enhancement Algorithm



The image taken with Surgnova unique image enhancement algorithm



Conventional Laparoscope

## Specification of DeepEye™—Endoscope

Items	LPS21000	LPS21030
Outer diameter	10mm	10mm
Working length	345.5mm	348.2mm
Direction of view	0°	30°
Field of view	91°(Diagonal)	85°(Diagonal)
Depth of field	20mm-120mm	20mm-120mm
Sterilization	Autoclavable	Autoclavable



Surgnova Healthcare Technologies

Tel: +86 10-6411-8265  
Fax : +86 10-6411-3261

E-mail: [mkt@surgnova.com](mailto:mkt@surgnova.com)  
Web: [www.surgnova.com](http://www.surgnova.com)



Surgnova on WeChat



Surgnova Healthcare Technologies