

CENTRE OF SIGN SIGHT SOUND

A BRIEF GUIDE TO TECHNOLOGY AND EQUIPMENT SERVICES IN FLINTSHIRE

FLINTSHIRE CSI



TECHNOLOGY &
EQUIPMENT

ABOUT THE FLINTSHIRE COMMUNITY SUPPORT INITIATIVE (CSI)

- What is the CSI?
- What is Technology and Equipment Support?
- Who is involved?

What is the CSI?

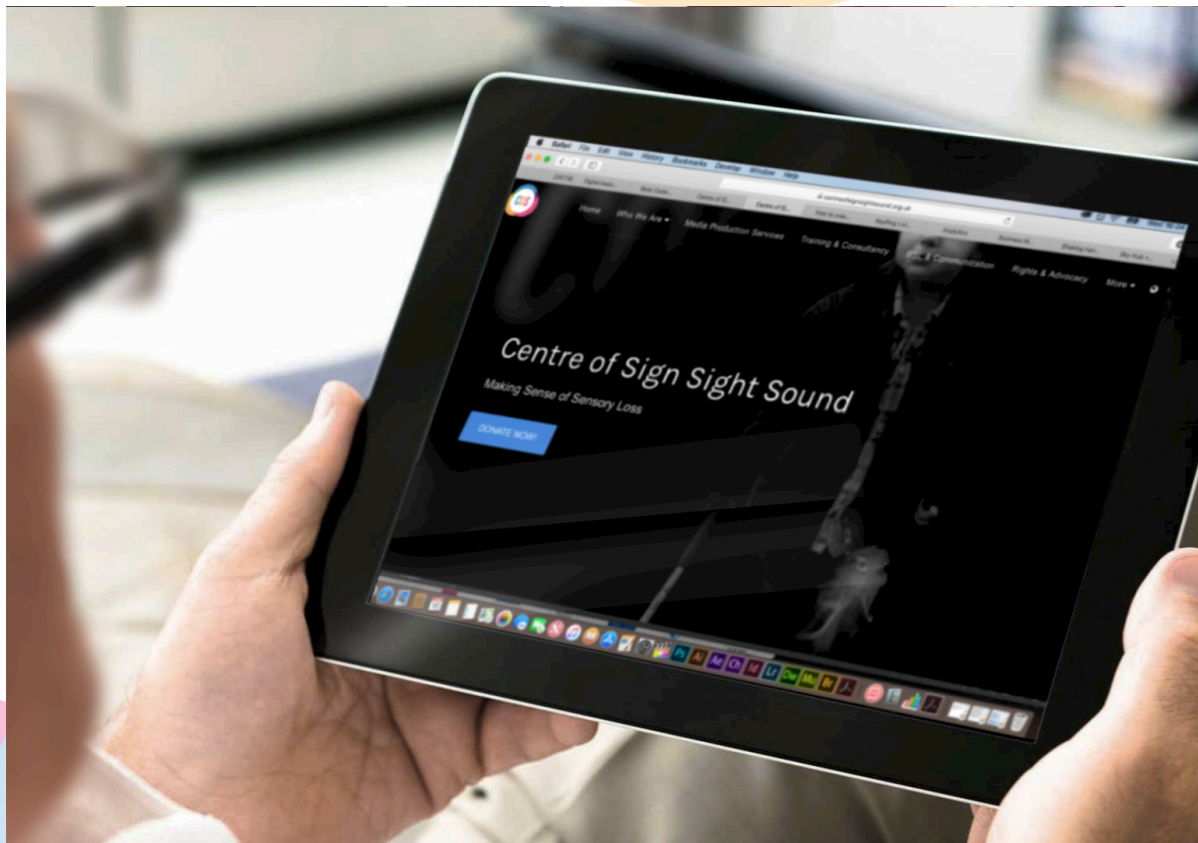
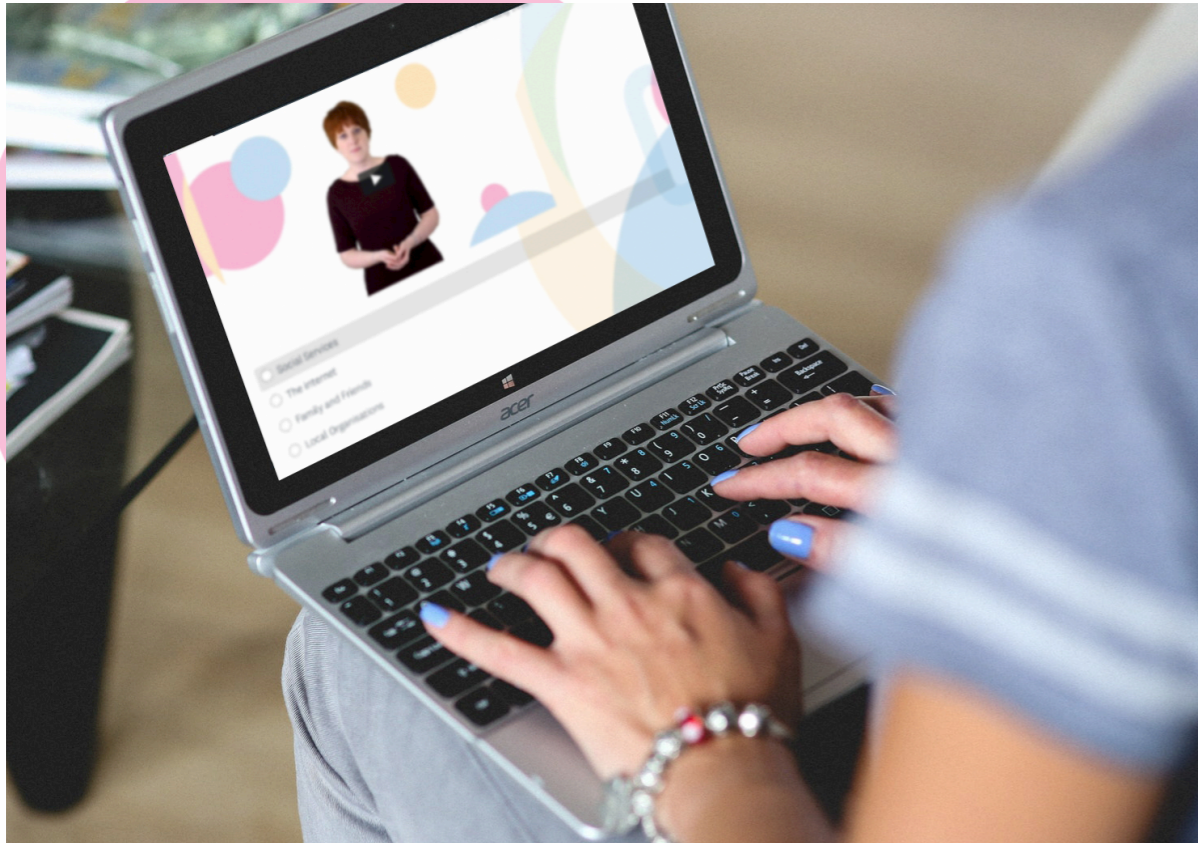
There are now new Services available to support people with disabilities in Flintshire. As from 1st of October 2018, four organisations have been commissioned to support people with disabilities in Flintshire under a new service structure. This is now as the Flintshire Community Support Initiative (CSI)



All services will place people with disabilities at the centre of all activities, focussing on what matters to people, with a holistic view of the individual's needs.

The services will focus on those adults and children with disabilities who do not meet the threshold of requiring formal support plans from social care services and will instead reach adults and children at the earliest opportunity, providing services to prevent their needs escalating.

This will also include individuals without a formal diagnosis of a disability, but where support is required to meet their personal outcomes. The services are also accessible to those receiving formal care and support from the local authority, including their carers.



What is Technology and Equipment Support?

COS has the responsibility within the CSI to provide a hub for information and advice regarding equipment and technology.

The service will work in 3 different ways to bring impartial advice, how to guides and reviews to people living in Flintshire.

Online

- We will host a range of guides and reviews written by people who use the equipment.
- We will create a list of places that you can go to buy equipment or to get your existing equipment repaired.
- We will host new social media pages where followers can hold online discussions in a safe environment.

In the Community

- We will attend established groups to discuss new developments in equipment and technology.
- We, along with our partners will host community



- events such as workshops, forums and pop-up stands to demonstrate new equipment and technologies.
- We will organise an annual event to bring manufacturers and suppliers of equipment together to showcase their latest developments.

In the Home

We know that it is not easy for everyone to get out and about and that not everyone has access to the internet, so we will carry out home visits to ensure that everyone has access to our information. For those people who are interested, we will introduce them to the digital world with some training.

For more information about the Flintshire Community Support Initiative or about Technology and Equipment please contact info@signsightsound.org or call

[Follow this link for more information about us.](#)



Find the **[COS Facebook](#)** here or this link:


<https://www.facebook.com/SignSightSound/>

Find the **[Flintshire CSI Technology and Support Facebook page](#)** here or us this link:

<https://www.facebook.com/COSTechEquip>

If you receive or use the technology and equipment service from the Flintshire CSI you can join the **[Facebook Group](#)** for private discussions in this closed forum. Alternatively you can use this link:

<https://www.facebook.com/groups/407987666614599/>



**Leonard
Cheshire**
Cymru

Leonard Cheshire are the Partnership Coordinator and the core aim of the service is that adults and children have a central point of contact in Flintshire as a way to access local services that can meet their personal outcomes. This is a key role to ensure that all service providers within the new service structure collaborate, innovate and share information to develop and improve services to the benefit of people using services.

Leonard Cheshire - Partnership Coordinator

KeyRing - Community Enrichment and Transport

KeyRing Living Support Network will deliver Community Enrichment and Transport. The core aim of the service is to provide adults and children with a greater choice and control and to have independence for active community participation. This will include safe access to transport as an enabler for equal participation in society.



KeyRing
... We're Life Changing

Deafness Support Network - Sensory Loss

DSN deliver the Sensory Loss aspect of this partnership. This services will undertake assessments in relation to orientation, mobility, communication and daily living skills as impacted by sensory loss. It will devise and implement rehabilitation/habilitation plans following assessment.

It will also provide communication support and interpreters to assist with short term communication and enable individuals to access Social Care Service within Flintshire.



DEAFNESS
SUPPORT NETWORK